

TTLL3 Rabbit pAb

CatalogNo: YN3386

Key Features

Host Species

- Rabbit

Reactivity

- Human, Mouse

Applications

- WB

MW

- 85kD (Observed)

Isotype

- IgG

Recommended Dilution Ratios

WB 1:500-2000

Storage

Storage*

-15°C to -25°C/1 year (Do not lower than -25°C)

Formulation

Liquid in PBS containing 50% glycerol, 0.5% BSA and 0.02% sodium azide.

Basic Information

Clonality

Polyclonal

Immunogen Information

Immunogen

Synthesized peptide derived from human TTLL3 AA range: 357-407

Specificity

This antibody detects endogenous levels of TTLL3 at Human/Mouse

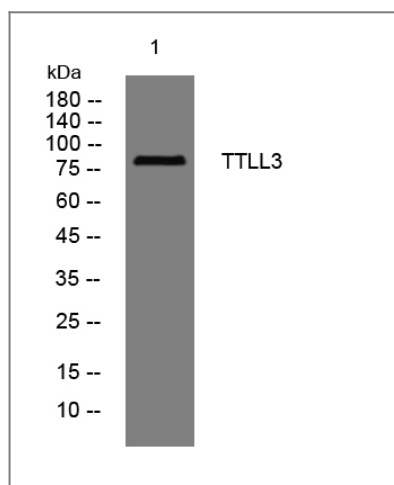
Target Information

Gene name

TTLL3 PRO0207

Protein Name	TTLL3		
	Organism	Gene ID	UniProt ID
	Human	26140;	Q9Y4R7;
	Mouse	101100;	A4Q9E5;
Cellular Localization	Cytoplasm, cytoskeleton . Cell projection, cilium . Cytoplasm, cytoskeleton, cilium axoneme . Cytoplasm, cytoskeleton, flagellum axoneme .		
Tissue specificity	Expressed in brain, heart, kidney, testis, liver, lung, muscle, spleen, trachea and colon.		
Function	Function:Functions as actin-binding component of the Arp2/3 complex which is involved in regulation of actin polymerization and together with an activating nucleation-promoting factor (NPF) mediates the formation of branched actin networks. Seems to contact the mother actin filament.,similarity:Belongs to the ARPC4 family.,similarity:Contains 1 TTL domain.,subunit:Component of the Arp2/3 complex composed of ARP2, ARP3, ARPC1B/p41-ARC, ARPC2/p34-ARC, ARPC3/p21-ARC, ARPC4/p20-ARC and ARPC5/p16-ARC.,		

Validation Data



Western blot analysis of lysates from HpeG2 cells, primary antibody was diluted at 1:1000, 4°over night

Contact information

Orders: order@immunoway.com
 Support: tech@immunoway.com
 Telephone: 877-594-3616 (Toll Free), 408-747-0185
 Website: <http://www.immunoway.com>
 Address: 2200 Ringwood Ave San Jose, CA 95131 USA



Please scan the QR code to access additional product information:
TTLL3 Rabbit pAb

