

TLE3 Rabbit pAb

CatalogNo: YN3385

| Key Features

Host Species

- Rabbit

Reactivity

- Human, Mouse, Rat

Applications

- WB

MW

- 85kD (Observed)

Isotype

- IgG

| Recommended Dilution Ratios

WB 1:500-2000

| Storage

Storage*

-15°C to -25°C/1 year (Do not lower than -25°C)

Formulation

Liquid in PBS containing 50% glycerol, 0.5% BSA and 0.02% sodium azide.

| Basic Information

Clonality

Polyclonal

| Immunogen Information

Immunogen

Synthesized peptide derived from human TLE3 AA range: 257-307

Specificity

This antibody detects endogenous levels of TLE3 at Human/Mouse/Rat

| Target Information

Gene name

TLE3 KIAA1547

Protein Name TLE3

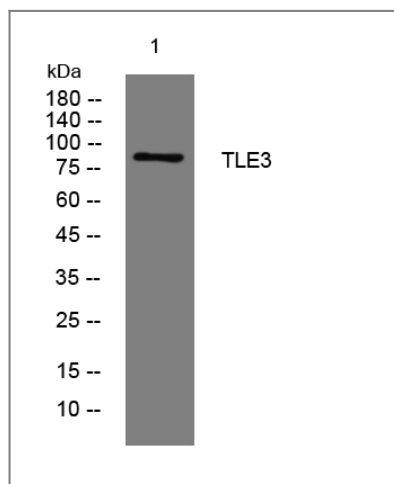
Organism	Gene ID	UniProt ID
Human	7090;	Q04726;
Mouse	21887;	Q08122;
Rat	84424;	Q9JIT3;

Cellular Localization Nucleus.

Tissue specificity Placenta and lung.

Function Alternative products:Experimental confirmation may be lacking for some isoforms,Function:Transcriptional corepressor that binds to a number of transcription factors. Inhibits the transcriptional activation mediated by CTNNB1 and TCF family members in Wnt signaling. The effects of full-length TLE family members may be modulated by association with dominant-negative AES.,similarity:Belongs to the WD repeat Groucho/TLE family.,similarity:Contains 7 WD repeats.,subunit:Homooligomer and heterooligomer with other family members. Binds LEF1, TCF7, TCF7L1 and TCF7L2 (By similarity). Binds FOXA2.,tissue specificity:Placenta and lung.,

Validation Data



Western blot analysis of lysates from THP-1 cells, primary antibody was diluted at 1:1000, 4°over night

Contact information

Orders: order@immunoway.com
Support: tech@immunoway.com
Telephone: 877-594-3616 (Toll Free), 408-747-0185
Website: <http://www.immunoway.com>
Address: 2200 Ringwood Ave San Jose, CA 95131 USA



Please scan the QR code to access additional product information:
TLE3 Rabbit pAb

