

PTHD3 Rabbit pAb

CatalogNo: YN3364

| Key Features

Host Species

- Rabbit

Reactivity

- Human, Mouse

Applications

- WB

MW

- 85kD (Observed)

Isotype

- IgG

| Recommended Dilution Ratios

WB 1:500-2000

| Storage

Storage*

-15°C to -25°C/1 year (Do not lower than -25°C)

Formulation

Liquid in PBS containing 50% glycerol, 0.5% BSA and 0.02% sodium azide.

| Basic Information

Clonality

Polyclonal

| Immunogen Information

Immunogen

Synthesized peptide derived from human PTHD3 AA range: 244-294

Specificity

This antibody detects endogenous levels of PTHD3 at Human/Mouse

| Target Information

Gene name

PTCHD3 PTR

Protein Name

PTHD3

Organism**Gene ID****UniProt ID**

Human

[374308;](#)[Q3KNS1;](#)

Mouse

[74675;](#)[Q0EEE2;](#)**Cellular Localization**

Cell projection, cilium, flagellum membrane ; Multi-pass membrane protein . Endoplasmic reticulum membrane ; Multi-pass membrane protein . Localizes to the midpiece of the sperm tail. .

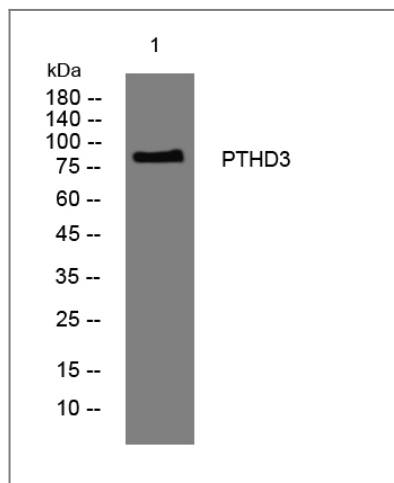
Tissue specificity

Expressed in germ cells of the testis (at protein level) (PubMed:17904097). Detected in blood lymph, colon, small intestine, ovary, testis, prostate, thymus and spleen with highest levels in testis (PubMed:21439084).

Function

Function:May play a role in sperm development or sperm function.,sequence Caution:Translated as stop.,similarity:Belongs to the patched family.,similarity:Contains 1 SSD (sterol-sensing) domain.,subcellular location:Localizes to the midpiece of the sperm tail.,tissue specificity:Expressed in germ cells of the testis (at protein level).,

Validation Data



Western blot analysis of lysates from MCF-7 cells, primary antibody was diluted at 1:1000, 4° over night

Contact information

Orders: order@immunoway.com
Support: tech@immunoway.com
Telephone: 877-594-3616 (Toll Free), 408-747-0185
Website: <http://www.immunoway.com>
Address: 2200 Ringwood Ave San Jose, CA 95131 USA



Please scan the QR code to access additional product information:
PTHD3 Rabbit pAb

