

## NSUN2 Rabbit pAb

CatalogNo: YN3363

### | Key Features

#### Host Species

- Rabbit

#### Reactivity

- Human, Mouse

#### Applications

- WB

#### MW

- 85kD (Observed)

#### Isotype

- IgG

### | Recommended Dilution Ratios

WB 1:500-2000

### | Storage

#### Storage\*

-15°C to -25°C/1 year (Do not lower than -25°C)

#### Formulation

Liquid in PBS containing 50% glycerol, 0.5% BSA and 0.02% sodium azide.

### | Basic Information

#### Clonality

Polyclonal

### | Immunogen Information

#### Immunogen

Synthesized peptide derived from human NSUN2 AA range: 658-708

#### Specificity

This antibody detects endogenous levels of NSUN2 at Human/Mouse

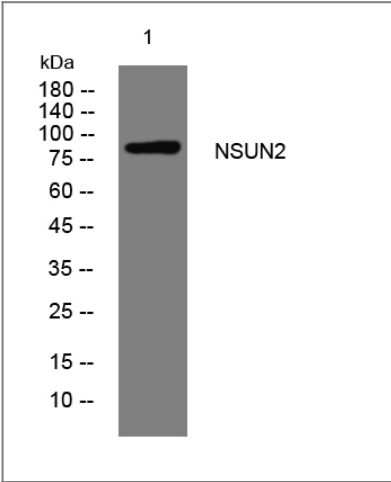
### | Target Information

#### Gene name

NSUN2 SAKI TRM4

Protein Name	NSUN2		
	Organism	Gene ID	UniProt ID
	Human	<a href="#">54888;</a>	<a href="#">Q08J23;</a>
	Mouse	<a href="#">28114;</a>	<a href="#">Q1HFZ0;</a>
Cellular Localization	Nucleus, nucleolus . Cytoplasm . Mitochondrion . Cytoplasm, cytoskeleton, spindle . Secreted, extracellular exosome . Concentrated in the nucleolus during interphase and translocates to the spindle during mitosis as an RNA-protein complex that includes 18S ribosomal RNA (PubMed:19596847). In testis, localizes to the chromatoid body (By similarity). .		
Tissue specificity	Expressed in adult and fetal brain and in lymphoblastoid cells.		
Function	Catalytic activity:S-adenosyl-L-methionine + tRNA = S-adenosyl-L-homocysteine + tRNA containing 5-methylcytosine.,Function:RNA methyltransferase that methylates tRNAs, and possibly RNA polymerase III transcripts. Methylates cytosine to 5-methylcytosine (m5C) at position 34 of intron-containing tRNA(Leu)(CAA) precursors. Not able to modify tRNAs at positions 48 or 49. May act downstream of Myc to regulate epidermal cell growth and proliferation.,PTM:Phosphorylated at Ser-139 by Aurora-B/STK12 during mitosis, leading to abolish methyltransferase activity and the interaction with NPM1.,similarity:Belongs to the methyltransferase superfamily. RsmB/NOP family. TRM4 subfamily.,subcellular location:Concentrated in the nucleolus during interphase and distributed in the perichromosome and cytoplasm during mitosis.,subunit:Interacts with NPM1 and NCL during interphase; interaction is disrupted following phosphorylation at Ser-139.,		

| Validation Data



Western blot analysis of lysates from 293T cells, primary antibody was diluted at 1:1000, 4°over night

| Contact information

Orders: order@immunoway.com  
Support: tech@immunoway.com  
Telephone: 877-594-3616 (Toll Free), 408-747-0185  
Website: <http://www.immunoway.com>  
Address: 2200 Ringwood Ave San Jose, CA 95131 USA



Please scan the QR code  
to access additional  
product information:  
**NSUN2 Rabbit pAb**

---

For Research Use Only. Not for Use in Diagnostic Procedures.

[Antibody](#) | [ELISA Kits](#) | [Protein](#) | [Reagents](#)