

## F16B1 Rabbit pAb

CatalogNo: YN3348

### | Key Features

#### Host Species

- Rabbit

#### Reactivity

- Human, Mouse

#### Applications

- WB

#### MW

- 85kD (Observed)

#### Isotype

- IgG

### | Recommended Dilution Ratios

WB 1:500-2000

### | Storage

#### Storage\*

-15°C to -25°C/1 year (Do not lower than -25°C)

#### Formulation

Liquid in PBS containing 50% glycerol, 0.5% BSA and 0.02% sodium azide.

### | Basic Information

#### Clonality

Polyclonal

### | Immunogen Information

#### Immunogen

Synthesized peptide derived from human F16B1 AA range: 211-261

#### Specificity

This antibody detects endogenous levels of F16B1 at Human/Mouse

### | Target Information

#### Gene name

FAM160B1 KIAA1600

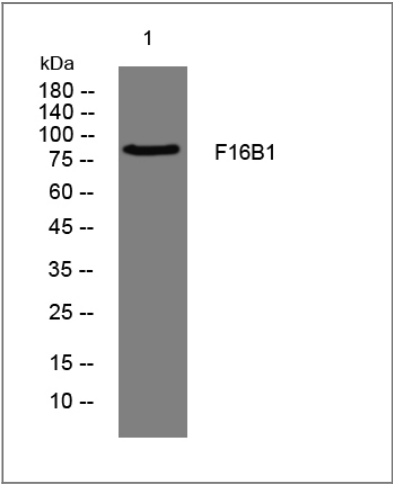
**Protein Name** F16B1

Organism	Gene ID	UniProt ID
Human	<a href="#">57700</a> ;	<a href="#">Q5W0V3</a> ;
Mouse	<a href="#">226252</a> ;	<a href="#">Q8CDM8</a> ;

**Tissue specificity** [Isoform 1]: Expressed in all tissues tested, highly expressed brain. ; [Isoform 2]: Only detected at high levels in testis.

**Function** similarity:Belongs to the UPF0518 family.,

Validation Data



Western blot analysis of lysates from U2OS cells, primary antibody was diluted at 1:1000, 4°over night

Contact information

Orders: order@immunoway.com  
Support: tech@immunoway.com  
Telephone: 877-594-3616 (Toll Free), 408-747-0185  
Website: http://www.immunoway.com  
Address: 2200 Ringwood Ave San Jose, CA 95131 USA



Please scan the QR code to access additional product information:  
**F16B1 Rabbit pAb**