

## OSB10 Rabbit pAb

CatalogNo: YN3346

### | Key Features

#### Host Species

- Rabbit

#### Reactivity

- Human, Mouse

#### Applications

- WB

#### MW

- 85kD (Observed)

#### Isotype

- IgG

### | Recommended Dilution Ratios

**WB 1:500-2000**

### | Storage

#### Storage\*

-15°C to -25°C/1 year (Do not lower than -25°C)

#### Formulation

Liquid in PBS containing 50% glycerol, 0.5% BSA and 0.02% sodium azide.

### | Basic Information

#### Clonality

Polyclonal

### | Immunogen Information

#### Immunogen

Synthesized peptide derived from human OSB10 AA range: 274-324

#### Specificity

This antibody detects endogenous levels of OSB10 at Human

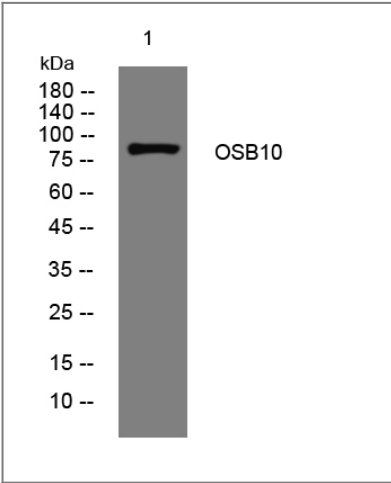
### | Target Information

#### Gene name

OSBPL10 ORP10 OSBP9

<b>Protein Name</b>	OSB10		
	<b>Organism</b>	<b>Gene ID</b>	<b>UniProt ID</b>
	Human	<a href="#">114884;</a>	<a href="#">Q9BXB5;</a>
<b>Cellular Localization</b>	Cytoplasm, cytoskeleton . Associates with microtubules. .		
<b>Tissue specificity</b>	Aorta endothelial cell,Skin,		
<b>Function</b>	similarity:Belongs to the OSBP family.,similarity:Contains 1 PH domain.,		

Validation Data



Western blot analysis of lysates from MDA-MB cells, primary antibody was diluted at 1:1000, 4°over night

Contact information

Orders: order@immunoway.com  
Support: tech@immunoway.com  
Telephone: 877-594-3616 (Toll Free), 408-747-0185  
Website: http://www.immunoway.com  
Address: 2200 Ringwood Ave San Jose, CA 95131 USA



Please scan the QR code to access additional product information:  
**OSB10 Rabbit pAb**