

CEP85 Rabbit pAb

CatalogNo: YN3337

| Key Features

Host Species

- Rabbit

Reactivity

- Human, Mouse

Applications

- WB

MW

- 85kD (Observed)

Isotype

- IgG

| Recommended Dilution Ratios

WB 1:500-2000

| Storage

Storage*

-15°C to -25°C/1 year (Do not lower than -25°C)

Formulation

Liquid in PBS containing 50% glycerol, 0.5% BSA and 0.02% sodium azide.

| Basic Information

Clonality

Polyclonal

| Immunogen Information

Immunogen

Synthesized peptide derived from human CEP85 AA range: 267-317

Specificity

This antibody detects endogenous levels of CEP85 at Human/Mouse

| Target Information

Gene name

CEP85 CCDC21

Protein Name CEP85

Organism	Gene ID	UniProt ID
Human	64793;	Q6P2H3;
Mouse	70012;	Q8BMK0;

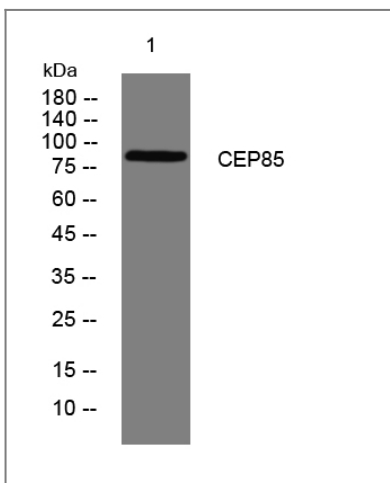
**Cellular
Localization**

Cytoplasm, cytoskeleton, microtubule organizing center, centrosome . Cytoplasm, cytoskeleton, spindle pole . Nucleus, nucleolus . Localizes to centrosomes and nucleolus in interphase. Upon entry into mitosis, relocates from nucleolus and accumulates at spindle poles (PubMed:21399614). Associated with the pericentriolar material. Localizes to centrosomes at a low level in G1 phase and a slightly increased level in S phase, with gradually elevated levels during G2 phase. The levels at centrosomes further increase at G2/M, reaching a peak at spindle poles at early mitotic stages and remain high until the end of anaphase (PubMed:26220856). .

Tissue specificity Hepatoma,Placenta,Retinoblastoma,Testis,

Function similarity:Belongs to the CCDC21 family.,

Validation Data



Western blot analysis of lysates from A549 cells, primary antibody was diluted at 1:1000, 4° over night

Contact information

Orders: order@immunoway.com
Support: tech@immunoway.com
Telephone: 877-594-3616 (Toll Free), 408-747-0185
Website: <http://www.immunoway.com>
Address: 2200 Ringwood Ave San Jose, CA 95131 USA



Please scan the QR code to access additional product information:
CEP85 Rabbit pAb

