

ZN711 Rabbit pAb

CatalogNo: YN3336

| Key Features

Host Species

- Rabbit

Reactivity

- Human, Mouse

Applications

- WB

MW

- 85kD (Observed)

Isotype

- IgG

| Recommended Dilution Ratios

WB 1:500-2000

| Storage

Storage*

-15°C to -25°C/1 year (Do not lower than -25°C)

Formulation

Liquid in PBS containing 50% glycerol, 0.5% BSA and 0.02% sodium azide.

| Basic Information

Clonality

Polyclonal

| Immunogen Information

Immunogen

Synthesized peptide derived from human ZN711 AA range: 438-488

Specificity

This antibody detects endogenous levels of ZN711 at Human/Mouse

| Target Information

Gene name

ZN711 CMPX1 ZNF6

Protein Name ZN711

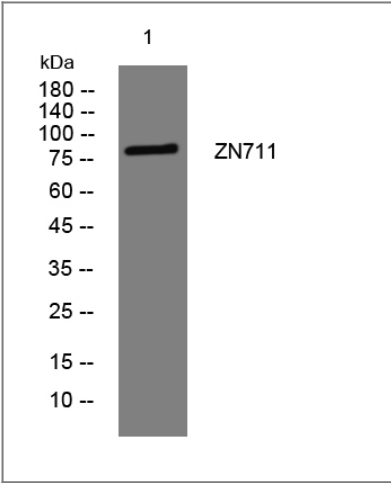
Organism	Gene ID	UniProt ID
Human	7552;	Q9Y462;
Mouse		A2ANX9;

Cellular Localization Nucleus .

Tissue specificity Expressed in neural tissues.

Function Function:May be involved in transcriptional regulation.,PTM:Phosphorylated upon DNA damage, probably by ATM or ATR.,similarity:Belongs to the krueppel C2H2-type zinc-finger protein family.,similarity:Contains 11 C2H2-type zinc fingers.,

| Validation Data



Western blot analysis of lysates from MCF-7 cells, primary antibody was diluted at 1:1000, 4°over night

| Contact information

Orders: order@immunoway.com
Support: tech@immunoway.com
Telephone: 877-594-3616 (Toll Free), 408-747-0185
Website: http://www.immunoway.com
Address: 2200 Ringwood Ave San Jose, CA 95131 USA



Please scan the QR code to access additional product information:
ZN711 Rabbit pAb