

P12L2 Rabbit pAb

CatalogNo: YN3328

| Key Features

Host Species

- Rabbit

Reactivity

- Human, Mouse

Applications

- WB

MW

- 105kD (Observed)

Isotype

- IgG

| Recommended Dilution Ratios

WB 1:500-2000

| Storage

Storage*

-15°C to -25°C/1 year (Do not lower than -25°C)

Formulation

Liquid in PBS containing 50% glycerol, 0.5% BSA and 0.02% sodium azide.

| Basic Information

Clonality

Polyclonal

| Immunogen Information

Immunogen

Synthesized peptide derived from human P12L2 AA range: 555-605

Specificity

This antibody detects endogenous levels of P12L2 at Human/Mouse

| Target Information

Gene name

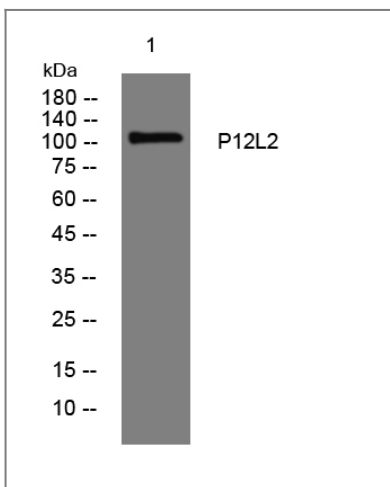
POM121L2 POM121L

Protein Name P12L2

Organism	Gene ID	UniProt ID
Human		Q96KW2 ;
Mouse	195236 ;	Q5SW25 ;

Cellular Localization nuclear pore,nuclear pore central transport channel,nuclear pore nuclear basket,

Validation Data



Western blot analysis of lysates from MCF-7 cells, primary antibody was diluted at 1:1000, 4°over night

Contact information

Orders: order@immunoway.com
Support: tech@immunoway.com
Telephone: 877-594-3616 (Toll Free), 408-747-0185
Website: <http://www.immunoway.com>
Address: 2200 Ringwood Ave San Jose, CA 95131 USA



Please scan the QR code to access additional product information:
P12L2 Rabbit pAb

For Research Use Only. Not for Use in Diagnostic Procedures.

[Antibody](#) | [ELISA Kits](#) | [Protein](#) | [Reagents](#)