

PP6R2 Rabbit pAb

CatalogNo: YN3315

| Key Features

Host Species

- Rabbit

Reactivity

- Human, Mouse

Applications

- WB

MW

- 105kD (Observed)

Isotype

- IgG

| Recommended Dilution Ratios

WB 1:500-2000

| Storage

Storage* -15°C to -25°C/1 year (Do not lower than -25°C)

Formulation Liquid in PBS containing 50% glycerol, 0.5% BSA and 0.02% sodium azide.

| Basic Information

Clonality Polyclonal

| Immunogen Information

Immunogen Synthesized peptide derived from human PP6R2 AA range: 59-109

Specificity This antibody detects endogenous levels of PP6R2 at Human/Mouse

| Target Information

Gene name PPP6R2 KIAA0685 PP6R2 SAPS2

Protein Name PP6R2

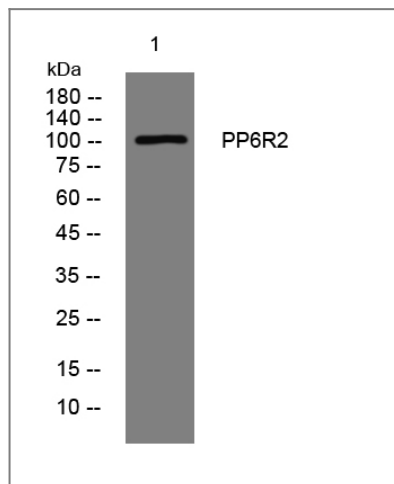
Organism	Gene ID	UniProt ID
Human	9701;	O75170;
Mouse		Q8R3Q2;

Cellular Localization Cytoplasm .

Tissue specificity Ubiquitously expressed with strongest expression in the testis followed by liver, heart, kidney, brain and placenta.

Function Function:Regulatory subunit of protein phosphatase 6 (PP6). May function as a scaffolding PP6 subunit. Involved in the PP6-mediated dephosphorylation of NFKBIE opposing its degradation in response to TNF-alpha.,similarity:Belongs to the SAPS family.,subunit:Protein phosphatase 6 (PP6) holoenzyme is proposed to be a heterotrimeric complex formed by the catalytic subunit, a SAPS domain-containing subunit (PP6R) and an ankyrin repeat-domain containing regulatory subunit (ARS). Interacts with PPP6C and NFKBIE. Interacts with ANKRD28.,tissue specificity:Ubiquitously expressed with strongest expression in the testis followed by liver, heart, kidney, brain and placenta.,

Validation Data



Western blot analysis of lysates from K562 cells, primary antibody was diluted at 1:1000, 4° over night

Contact information

Orders: order@immunoway.com
Support: tech@immunoway.com
Telephone: 877-594-3616 (Toll Free), 408-747-0185
Website: <http://www.immunoway.com>
Address: 2200 Ringwood Ave San Jose, CA 95131 USA



Please scan the QR code to access additional product information:
PP6R2 Rabbit pAb

