

TRI37 Rabbit pAb

CatalogNo: YN3313

Key Features

Host Species

- Rabbit

Reactivity

- Human, Mouse

Applications

- WB

MW

- 105kD (Observed)

Isotype

- IgG

Recommended Dilution Ratios

WB 1:500-2000

Storage

Storage*

-15°C to -25°C/1 year (Do not lower than -25°C)

Formulation

Liquid in PBS containing 50% glycerol, 0.5% BSA and 0.02% sodium azide.

Basic Information

Clonality

Polyclonal

Immunogen Information

Immunogen

Synthesized peptide derived from human TRI37 AA range: 315-365

Specificity

This antibody detects endogenous levels of TRI37 at Human/Mouse

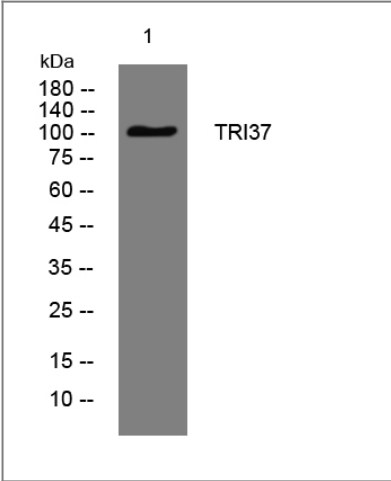
Target Information

Gene name

TRIM37 KIAA0898 MUL POB1

Protein Name	TRI37		
	Organism	Gene ID	UniProt ID
	Human	4591 ;	O94972 ;
	Mouse	68729 ;	Q6PCX9 ;
Cellular Localization	Cytoplasm, perinuclear region . Peroxisome . Found in vesicles of the peroxisome. Aggregates as aggresomes, a perinuclear region where certain misfolded or aggregated proteins are sequestered for proteasomal degradation. .		
Tissue specificity	Ubiquitous (PubMed:10888877). Highly expressed in testis, while it is weakly expressed in other tissues (PubMed:16310976).		
Function	Disease:Defects in TRIM37 are the cause of mulibrey nanism (MUL) [MIM:253250]; also called muscle-liver-brain-eye nanism. Mulibrey nanism is an autosomal recessive disorder that involves several tissues of mesodermal origin, implying a defect in a highly pleiotropic gene. Characteristic features include severe growth failure of prenatal onset and constrictive pericardium with consequent hepatomegaly. In addition, muscle hypotonia, J-shaped sella turcica, yellowish dots in the ocular fundi, typical dysmorphic features and hypoplasia of various endocrine glands causing hormonal deficiency are common.,similarity:Belongs to the TRIM/RBCC family.,similarity:Contains 1 B box-type zinc finger.,similarity:Contains 1 MATH domain.,similarity:Contains 1 RING-type zinc finger.,subcellular location:Found in vesicles of the peroxisome.,tissue specificity:Ubiquitous.,		

Validation Data



Western blot analysis of lysates from HpeG2 cells, primary antibody was diluted at 1:1000, 4°over night

Contact information

Orders: order@immunoway.com
Support: tech@immunoway.com
Telephone: 877-594-3616 (Toll Free), 408-747-0185
Website: http://www.immunoway.com
Address: 2200 Ringwood Ave San Jose, CA 95131 USA



Please scan the QR code
to access additional
product information:
TRI37 Rabbit pAb

For Research Use Only. Not for Use in Diagnostic Procedures.

[Antibody](#) | [ELISA Kits](#) | [Protein](#) | [Reagents](#)