

IREB2 Rabbit pAb

CatalogNo: YN3307

| Key Features

Host Species

- Rabbit

Reactivity

- Human, Mouse, Rat

Applications

- WB

MW

- 105kD (Observed)

Isotype

- IgG

| Recommended Dilution Ratios

WB 1:500-2000

| Storage

Storage* -15°C to -25°C/1 year (Do not lower than -25°C)

Formulation Liquid in PBS containing 50% glycerol, 0.5% BSA and 0.02% sodium azide.

| Basic Information

Clonality Polyclonal

| Immunogen Information

Immunogen Synthesized peptide derived from human IREB2 AA range: 702-752

Specificity This antibody detects endogenous levels of IREB2 at Human/Mouse/Rat

| Target Information

Gene name IREB2

Protein Name IREB2

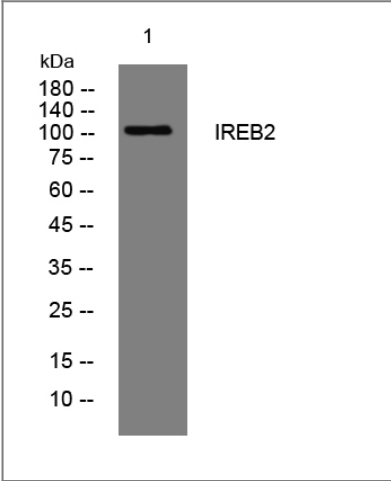
Organism	Gene ID	UniProt ID
Human	3658 ;	P48200 ;
Mouse	64602 ;	Q811J3 ;
Rat	64831 ;	Q62751 ;

Cellular Localization Cytoplasm.

Tissue specificity Brain,

Function cofactor: Binds 1 4Fe-4S cluster per subunit., Function: Binds to iron-responsive elements (IRES), which are stem-loop structures found in the 5'-UTR of ferritin, and delta aminolevulinic acid synthase mRNAs, and in the 3'-UTR of transferrin receptor mRNA. Binding to the IRE element in ferritin results in the repression of its mRNA translation. Binding of the protein to the transferrin receptor mRNA inhibits the degradation of this otherwise rapidly degraded mRNA., similarity: Belongs to the aconitase/IPM isomerase family.,

| Validation Data



Western blot analysis of lysates from HCT116 cells, primary antibody was diluted at 1:1000, 4° over night

| Contact information

Orders: order@immunoway.com
Support: tech@immunoway.com
Telephone: 877-594-3616 (Toll Free), 408-747-0185
Website: <http://www.immunoway.com>
Address: 2200 Ringwood Ave San Jose, CA 95131 USA



Please scan the QR code to access additional product information:
IREB2 Rabbit pAb

