

## IQEC1 Rabbit pAb

CatalogNo: YN3306

### | Key Features

#### Host Species

- Rabbit

#### Reactivity

- Human, Mouse

#### Applications

- WB

#### MW

- 105kD (Observed)

#### Isotype

- IgG

### | Recommended Dilution Ratios

WB 1:500-2000

### | Storage

**Storage\*** -15°C to -25°C/1 year (Do not lower than -25°C)

**Formulation** Liquid in PBS containing 50% glycerol, 0.5% BSA and 0.02% sodium azide.

### | Basic Information

**Clonality** Polyclonal

### | Immunogen Information

**Immunogen** Synthesized peptide derived from human IQEC1 AA range: 693-743

**Specificity** This antibody detects endogenous levels of IQEC1 at Human/Mouse

### | Target Information

**Gene name** IQSEC1 ARFGEP100 BRAG2 KIAA0763

**Protein Name** IQEC1

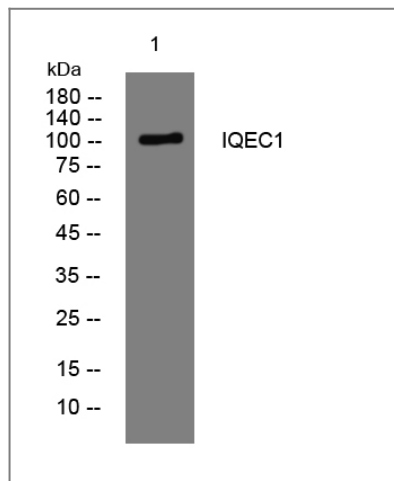
Organism	Gene ID	UniProt ID
Human	<a href="#">9922;</a>	<a href="#">Q6DN90;</a>
Mouse	<a href="#">232227;</a>	<a href="#">Q8R0S2;</a>

**Cellular Localization** Cytoplasm . Nucleus . Cell junction, synapse, postsynaptic density . Cytoplasmic vesicle, secretory vesicle, synaptic vesicle . At steady state, may be preferentially cytosolic.

**Tissue specificity** Expressed in brain, ovary, heart, lung, liver, kidney and leukocytes. Moderate expression was also detected in lung, skeletal muscle, placenta, small intestine, pancreas, spleen and testis.

**Function** Function:In addition to accelerate GTP gamma S binding by ARFs of all three classes, it appears to function preferentially as a guanine nucleotide exchange protein for ARF6, mediating internalisation of beta-1 integrin.,similarity:Belongs to the BRAG family.,similarity:Contains 1 IQ domain.,similarity:Contains 1 PH domain.,similarity:Contains 1 SEC7 domain.,subcellular location:At steady state, may be preferentially cytosolic.,subunit:Interacts with ARF6.,tissue specificity:Expressed in brain, ovary, heart, lung, liver, kidney and leukocytes. Moderate expression was also detected in lung, skeletal muscle, placenta, small intestine, pancreas, spleen and testis.,

## Validation Data



Western blot analysis of lysates from HCT116 cells, primary antibody was diluted at 1:1000, 4° over night

## Contact information

Orders: [order@immunoway.com](mailto:order@immunoway.com)  
Support: [tech@immunoway.com](mailto:tech@immunoway.com)  
Telephone: 877-594-3616 (Toll Free), 408-747-0185  
Website: <http://www.immunoway.com>  
Address: 2200 Ringwood Ave San Jose, CA 95131 USA



Please scan the QR code to access additional product information:  
**IQEC1 Rabbit pAb**

