

## CP062 Rabbit pAb

CatalogNo: YN3303

### | Key Features

#### Host Species

- Rabbit

#### Reactivity

- Human, Mouse, Rat

#### Applications

- WB

#### MW

- 105kD (Observed)

#### Isotype

- IgG

### | Recommended Dilution Ratios

WB 1:500-2000

### | Storage

#### Storage\*

-15°C to -25°C/1 year (Do not lower than -25°C)

#### Formulation

Liquid in PBS containing 50% glycerol, 0.5% BSA and 0.02% sodium azide.

### | Basic Information

#### Clonality

Polyclonal

### | Immunogen Information

#### Immunogen

Synthesized peptide derived from human CP062 AA range: 304-354

#### Specificity

This antibody detects endogenous levels of CP062 at Human/Mouse/Rat

### | Target Information

#### Gene name

C16orf62 101F10.2

**Protein Name** CP062

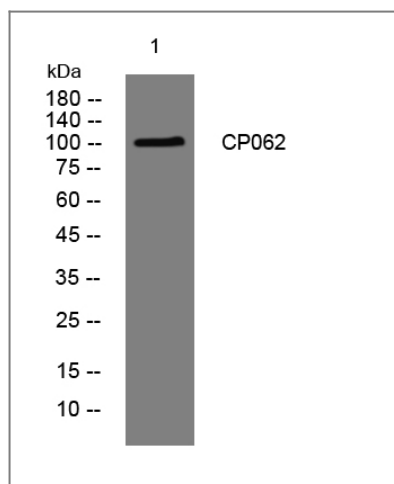
Organism	Gene ID	UniProt ID
Human	<a href="#">57020;</a>	<a href="#">Q7Z3J2;</a>
Mouse	<a href="#">71517;</a>	<a href="#">Q8BWQ6;</a>
Rat	<a href="#">361635;</a>	<a href="#">Q5XI83;</a>

**Cellular Localization** Membrane ; Single-pass membrane protein . Endosome . Endosome location is dependent of the association with the CCC and WASH complexes. .

**Tissue specificity** Epithelium,Heart,Pancreas,Testis,Tongue,Uterus,

**Function** similarity:Belongs to the UPF0505 family.,

## Validation Data



Western blot analysis of lysates from HpeG2 cells, primary antibody was diluted at 1:1000, 4°over night

## Contact information

Orders: [order@immunoway.com](mailto:order@immunoway.com)  
Support: [tech@immunoway.com](mailto:tech@immunoway.com)  
Telephone: 877-594-3616 (Toll Free), 408-747-0185  
Website: <http://www.immunoway.com>  
Address: 2200 Ringwood Ave San Jose, CA 95131 USA



Please scan the QR code to access additional product information:  
**CP062 Rabbit pAb**