

XPOT Rabbit pAb

CatalogNo: YN3302

Key Features

Host Species

- Rabbit

Reactivity

- Human, Mouse

Applications

- WB

MW

- 105kD (Observed)

Isotype

- IgG

Recommended Dilution Ratios

WB 1:500-2000

Storage

Storage*

-15°C to -25°C/1 year (Do not lower than -25°C)

Formulation

Liquid in PBS containing 50% glycerol, 0.5% BSA and 0.02% sodium azide.

Basic Information

Clonality

Polyclonal

Immunogen Information

Immunogen

Synthesized peptide derived from human XPOT AA range: 135-185

Specificity

This antibody detects endogenous levels of XPOT at Human/Mouse

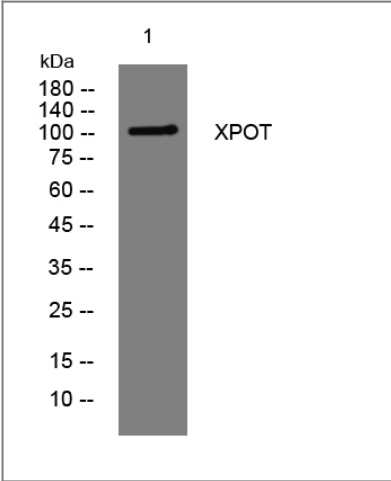
Target Information

Gene name

XPOT

Protein Name	XPOT		
	Organism	Gene ID	UniProt ID
	Human	11260 ;	O43592 ;
	Mouse		Q9CRT8 ;
Cellular Localization	Nucleus. Cytoplasm. Nuclear, once bound to tRNA and Ran the complex translocates to the cytoplasm. Shuttles between the nucleus and the cytoplasm.		
Tissue specificity	B-cell lymphoma,Cervix carcinoma,Lymph,Placenta,		
Function	<p>Function:Mediates the nuclear export of aminoacylated tRNAs. In the nucleus binds to tRNA and to the GTPase Ran in its active GTP-bound form. Docking of this trimeric complex to the nuclear pore complex (NPC) is mediated through binding to nucleoporins. Upon transit of a nuclear export complex into the cytoplasm, disassembling of the complex and hydrolysis of Ran-GTP to Ran-GDP (induced by RANBP1 and RANGAP1, respectively) cause release of the tRNA from the export receptor. XPOT then return to the nuclear compartment and mediate another round of transport. The directionality of nuclear export is thought to be conferred by an asymmetric distribution of the GTP- and GDP-bound forms of Ran between the cytoplasm and nucleus.,similarity:Belongs to the exportin family.,subcellular location:Nuclear, once bound to tRNA and Ran the complex translocates to the cytoplasm. Shuttles between the nucleus and the cytoplasm.,subunit:Found in a complex with XPOT, Ran and tRNA. Probably found in a complex with nucleoporins. Interacts with Ran and tRNA in a GTP-dependent manner.,</p>		

Validation Data



Western blot analysis of lysates from Hela cells, primary antibody was diluted at 1:1000, 4°over night

Contact information

Orders: order@immunoway.com
Support: tech@immunoway.com
Telephone: 877-594-3616 (Toll Free), 408-747-0185
Website: <http://www.immunoway.com>
Address: 2200 Ringwood Ave San Jose, CA 95131 USA



Please scan the QR code
to access additional
product information:
XPOT Rabbit pAb

For Research Use Only. Not for Use in Diagnostic Procedures.

[Antibody](#) | [ELISA Kits](#) | [Protein](#) | [Reagents](#)