

INT7 Rabbit pAb

CatalogNo: YN3300

Key Features

Host Species

- Rabbit

Reactivity

- Human, Mouse

Applications

- WB

MW

- 105kD (Observed)

Isotype

- IgG

Recommended Dilution Ratios

WB 1:500-2000

Storage

Storage* -15°C to -25°C/1 year (Do not lower than -25°C)

Formulation Liquid in PBS containing 50% glycerol, 0.5% BSA and 0.02% sodium azide.

Basic Information

Clonality Polyclonal

Immunogen Information

Immunogen Synthesized peptide derived from human INT7 AA range: 364-414

Specificity This antibody detects endogenous levels of INT7 at Human/Mouse

Target Information

Gene name INTS7 C1orf73

Protein Name INT7

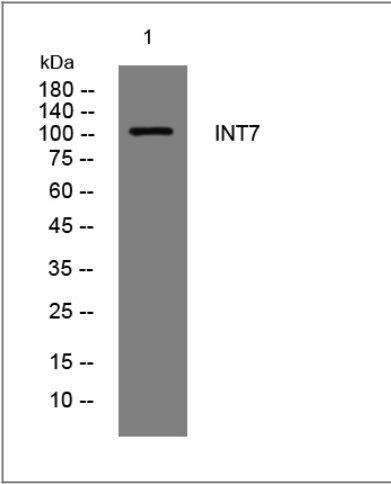
Organism	Gene ID	UniProt ID
Human	25896 ;	Q9NVH2 ;
Mouse	77065 ;	Q7TQK1 ;

Cellular Localization Nucleus . Chromosome . Cytoplasm . Localizes to sites of DNA damage in a H2AX-independent manner.

Tissue specificity Skin,Testis,Uterus,

Function Function:Component of the Integrator complex, a complex involved in the small nuclear RNAs (snRNA) U1 and U2 transcription and in their 3'-box-dependent processing. The Integrator complex is associated with the C-terminal domain (CTD) of RNA polymerase II largest subunit (POLR2A) and is recruited to the U1 and U2 snRNAs genes.,sequence Caution:Translated as Cys.,similarity:Belongs to the Integrator subunit 7 family.,subunit:Belongs to the multiprotein complex Integrator, at least composed of INTS1, INTS2, INTS3, INTS4, INTS5, INTS6, INTS7, INTS8, INTS9/RC74, INTS10, CPSF3L/INTS11 and INTS12.,

Validation Data



Western blot analysis of lysates from SH-SY5Y cells, primary antibody was diluted at 1:1000, 4°over night

Contact information

Orders: order@immunoway.com
Support: tech@immunoway.com
Telephone: 877-594-3616 (Toll Free), 408-747-0185
Website: http://www.immunoway.com
Address: 2200 Ringwood Ave San Jose, CA 95131 USA



Please scan the QR code to access additional product information:
INT7 Rabbit pAb

