

FGD1 Rabbit pAb

CatalogNo: YN3298

| Key Features

Host Species

- Rabbit

Reactivity

- Human, Mouse

Applications

- WB

MW

- 105kD (Observed)

Isotype

- IgG

| Recommended Dilution Ratios

WB 1:500-2000

| Storage

Storage*

-15°C to -25°C/1 year (Do not lower than -25°C)

Formulation

Liquid in PBS containing 50% glycerol, 0.5% BSA and 0.02% sodium azide.

| Basic Information

Clonality

Polyclonal

| Immunogen Information

Immunogen

Synthesized peptide derived from human FGD1 AA range: 508-558

Specificity

This antibody detects endogenous levels of FGD1 at Human/Mouse

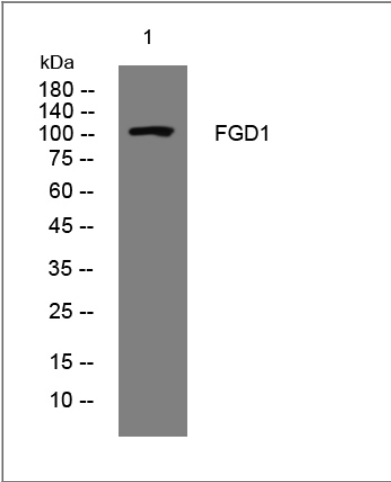
| Target Information

Gene name

FGD1 FGDY ZFYVE3

Protein Name	FGD1		
	Organism	Gene ID	UniProt ID
	Human	2245;	P98174;
	Mouse	14163;	P52734;
Cellular Localization	Cytoplasm . Cell projection, lamellipodium . Cell projection, ruffle . Cytoplasm, cytoskeleton . Associated with membrane ruffles and lamellipodia. .		
Tissue specificity	Expressed in fetal heart, brain, lung, kidney and placenta. Less expressed in liver; adult heart, brain, lung, pancreas and skeletal muscle.		
Function	Disease:Defects in FGD1 are a cause of non-syndromal X-linked mental retardation.,Disease:Defects in FGD1 are the cause of Aarskog-Scott syndrome (AAS) [MIM:305400]. This faciogenital dysplasia is a rare multisystemic disorder characterized by disproportionately short stature, and by facial, skeletal, and urogenital anomalies.,Domain:The DH domain is involved in interaction with CCPG1.,Function:Activates CDC42, a member of the Ras-like family of Rho-and Rac proteins, by exchanging bound GDP for free GTP. Plays a role in regulating the actin cytoskeleton and cell shape.,similarity:Contains 1 DH (DBL-homology) domain.,similarity:Contains 1 FYVE-type zinc finger.,similarity:Contains 2 PH domains.,subcellular location:Associated with membrane ruffles and lamellipodia.,subunit:Interacts with DBNL/ABP1 and CTTN. May interact with CCPG1 (By similarity). Binds CDC42.,tissue specificity:Expressed in fetal heart, brain, lung, kidney and placenta. Less expressed in liver; adult heart, brain, lung, pancreas and skeletal muscle.,		

Validation Data



Western blot analysis of lysates from A431 cells, primary antibody was diluted at 1:1000, 4°over night

Contact information

Orders: order@immunoway.com
Support: tech@immunoway.com
Telephone: 877-594-3616 (Toll Free), 408-747-0185
Website: <http://www.immunoway.com>
Address: 2200 Ringwood Ave San Jose, CA 95131 USA



Please scan the QR code
to access additional
product information:
FGD1 Rabbit pAb

For Research Use Only. Not for Use in Diagnostic Procedures.

[Antibody](#) | [ELISA Kits](#) | [Protein](#) | [Reagents](#)