

SMAL1 Rabbit pAb

CatalogNo: YN3272

Key Features

Host Species

- Rabbit

Reactivity

- Human, Mouse, Rat

Applications

- WB

MW

- 105kD (Observed)

Isotype

- IgG

Recommended Dilution Ratios

WB 1:500-2000

Storage

Storage* -15°C to -25°C/1 year (Do not lower than -25°C)

Formulation Liquid in PBS containing 50% glycerol, 0.5% BSA and 0.02% sodium azide.

Basic Information

Clonality Polyclonal

Immunogen Information

Immunogen Synthesized peptide derived from human SMAL1 AA range: 485-535

Specificity This antibody detects endogenous levels of SMAL1 at Human/Mouse/Rat

Target Information

Gene name SMARCAL1 HARP

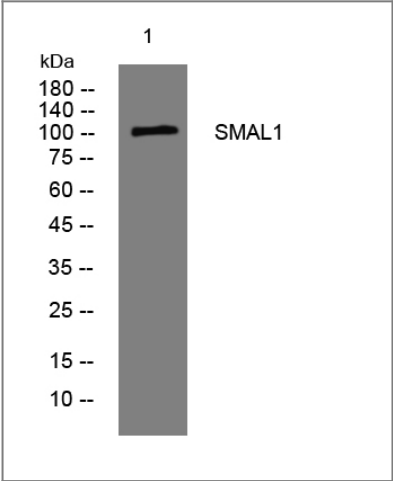
Protein Name	SMAL1		
	Organism	Gene ID	UniProt ID
	Human	50485;	Q9NZC9;
	Mouse	54380;	Q8BJL0;
	Rat	316477;	B4F769;

Cellular Localization Nucleus . Recruited to damaged DNA regions.

Tissue specificity Ubiquitously expressed, with high levels in testis.

Function Disease:Defects in SMARCAL1 are a cause of Schimke immuno-osseous dysplasia (SIOD) [MIM:242900]. SIOD causes spondyloepiphyseal dysplasia, renal dysfunction and T-cell immunodeficiency. Approximately half of all patients also exhibit hyperthyroidism, while around half also exhibit episodal cerebral ischemia.,Function:ATP-dependent annealing helicase that catalyzes the rewinding of the stably unwound DNA. Rewinds single-stranded DNA bubbles that are stably bound by replication protein A (RPA). Acts throughout the genome to reanneal stably unwound DNA, performing the opposite reaction of many enzymes, such as helicases and polymerases, that unwind DNA.,online information:SMARCAL1 mutation db,similarity:Belongs to the SNF2/RAD54 helicase family. SMARCAL1 subfamily.,similarity:Contains 1 helicase ATP-binding domain.,similarity:Contains 1 helicase C-terminal domain.,similarity:Contains 2 HARP domains.,tissue specificity:Ubiquitously expressed, with high levels in testis.,

Validation Data



Western blot analysis of lysates from 293T cells, primary antibody was diluted at 1:1000, 4°over night

Contact information

Orders: order@immunoway.com
Support: tech@immunoway.com
Telephone: 877-594-3616 (Toll Free), 408-747-0185
Website: <http://www.immunoway.com>
Address: 2200 Ringwood Ave San Jose, CA 95131 USA



Please scan the QR code
to access additional
product information:
SMAL1 Rabbit pAb

For Research Use Only. Not for Use in Diagnostic Procedures.

[Antibody](#) | [ELISA Kits](#) | [Protein](#) | [Reagents](#)