

PSMD1 Rabbit pAb

CatalogNo: YN3267

Key Features

Host Species

- Rabbit

Reactivity

- Human, Mouse, Rat

Applications

- WB

MW

- 105kD (Observed)

Isotype

- IgG

Recommended Dilution Ratios

WB 1:500-2000

Storage

Storage*

-15°C to -25°C/1 year (Do not lower than -25°C)

Formulation

Liquid in PBS containing 50% glycerol, 0.5% BSA and 0.02% sodium azide.

Basic Information

Clonality

Polyclonal

Immunogen Information

Immunogen

Synthesized peptide derived from human PSMD1 AA range: 192-242

Specificity

This antibody detects endogenous levels of PSMD1 at Human/Mouse/Rat

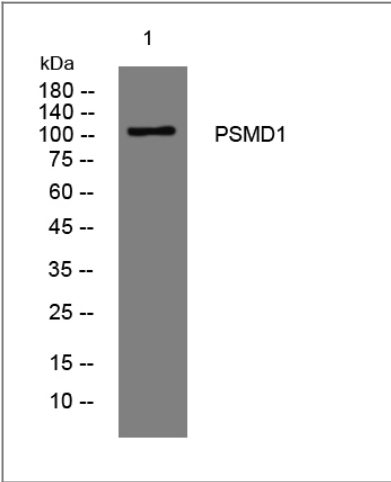
Target Information

Gene name

PSMD1

Protein Name	PSMD1		
	Organism	Gene ID	UniProt ID
	Human	5707;	Q99460;
	Mouse	70247;	Q3TXS7;
	Rat	83806;	O88761;
Cellular Localization	proteasome complex,nucleus,nucleoplasm,cytosol,proteasome regulatory particle,proteasome regulatory particle, base subcomplex,membrane,integral component of membrane,proteasome accessory complex,proteasome storage granule,extracellular exosome,		
Tissue specificity	Cervix,Epithelium,Hepatocyte,Liver,Lymph,Placenta,Testis,Uterus,		
Function	Function:Acts as a regulatory subunit of the 26 proteasome which is involved in the ATP-dependent degradation of ubiquitinated proteins.,sequence Caution:Contaminating sequence. Potential poly-A sequence.,similarity:Belongs to the proteasome subunit S1 family.,similarity:Contains 10 PC repeats.,subunit:Interacts with ADRM1.,		

| Validation Data



Western blot analysis of lysates from U2OS cells, primary antibody was diluted at 1:1000, 4°over night

| Contact information

Orders: order@immunoway.com
Support: tech@immunoway.com
Telephone: 877-594-3616 (Toll Free), 408-747-0185
Website: http://www.immunoway.com
Address: 2200 Ringwood Ave San Jose, CA 95131 USA



Please scan the QR code to access additional product information:
PSMD1 Rabbit pAb

