

CP011 Rabbit pAb

CatalogNo: YN3233

| Key Features

Host Species

- Rabbit

Reactivity

- Human

Applications

- WB

MW

- 65kD (Observed)

Isotype

- IgG

| Recommended Dilution Ratios

WB 1:500-2000

| Storage

Storage* -15°C to -25°C/1 year(Do not lower than -25°C)

Formulation Liquid in PBS containing 50% glycerol, 0.5% BSA and 0.02% sodium azide.

| Basic Information

Clonality Polyclonal

| Immunogen Information

Immunogen Synthesized peptide derived from human CP011 AA range: 477-527

Specificity This antibody detects endogenous levels of CP011 at Human

| Target Information

Gene name C16orf11

Protein Name CP011

Organism

Gene ID

UniProt ID

Human

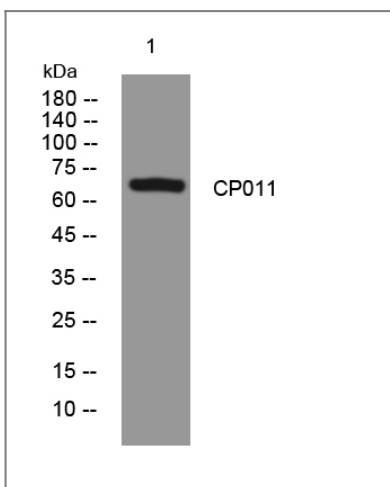
[146325;](#)

[P0CG20;](#)

Tissue specificity Eye,Thymus,

Function similarity:Contains 5 NHL repeats.,

Validation Data



Western blot analysis of lysates from A549 cells, primary antibody was diluted at 1:1000, 4°over night

Contact information

Orders: order@immunoway.com
Support: tech@immunoway.com
Telephone: 877-594-3616 (Toll Free), 408-747-0185
Website: <http://www.immunoway.com>
Address: 2200 Ringwood Ave San Jose, CA 95131 USA



Please scan the QR code to access additional product information:
CP011 Rabbit pAb

For Research Use Only. Not for Use in Diagnostic Procedures.

[Antibody](#) | [ELISA Kits](#) | [Protein](#) | [Reagents](#)