

## IL1AP Rabbit pAb

CatalogNo: YN3225

### | Key Features

#### Host Species

- Rabbit

#### Reactivity

- Human, Mouse, Rat

#### Applications

- WB

#### MW

- 65kD (Observed)

#### Isotype

- IgG

### | Recommended Dilution Ratios

**WB 1:500-2000**

### | Storage

#### Storage\*

-15°C to -25°C/1 year (Do not lower than -25°C)

#### Formulation

Liquid in PBS containing 50% glycerol, 0.5% BSA and 0.02% sodium azide.

### | Basic Information

#### Clonality

Polyclonal

### | Immunogen Information

#### Immunogen

Synthesized peptide derived from human IL1AP AA range: 213-263

#### Specificity

This antibody detects endogenous levels of IL1AP at Human/Mouse/Rat

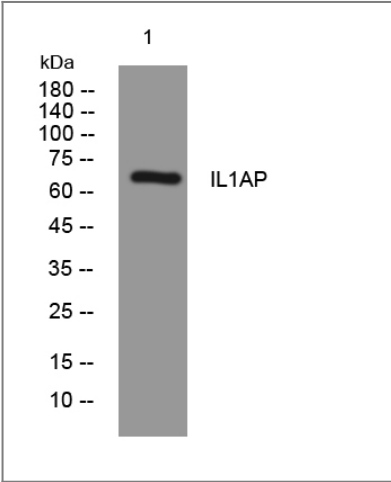
### | Target Information

#### Gene name

IL1RAP C3orf13 IL1R3

<b>Protein Name</b>	IL1AP		
	<b>Organism</b>	<b>Gene ID</b>	<b>UniProt ID</b>
	Human	<a href="#">3556;</a>	<a href="#">Q9NPH3;</a>
	Mouse	<a href="#">16180;</a>	<a href="#">Q61730;</a>
	Rat	<a href="#">25466;</a>	<a href="#">Q63621;</a>
<b>Cellular Localization</b>	[Isoform 1]: Cell membrane; Single-pass type I membrane protein.; [Isoform 2]: Secreted.; [Isoform 3]: Secreted.		
<b>Tissue specificity</b>	Detected in liver, skin, placenta, thymus and lung. Isoform 4 is predominantly expressed in brain. Overexpressed on candidate chronic myeloid leukemia (CML) stem cells, hematopoietic stem cells and mononuclear cells of patients with acute myeloid leukemia (AML). Overexpressed in patients with chronic obstructive pulmonary disease (COPD). Expressed in T-helper 1 (Th1) and T-helper 2 (Th2) cell subsets (PubMed:10653850).		
<b>Function</b>	Function:Mediates interleukin-1-dependent activation of NF-kappa-B. Isoform 1 is part of the membrane-bound form of the IL-1 receptor. Signaling involves formation of a ternary complex containing IL1R1, TOLLIP, MYD88, and IRAK1 or IRAK2. Isoform 2 modulates the response to interleukins by associating with soluble IL1R1 and enhancing interleukin-binding to the decoy receptor.,induction:Phorbol ester treatment causes down-regulation of isoform 1 and induction of isoform 2.,similarity:Belongs to the interleukin-1 receptor family.,similarity:Contains 1 TIR domain.,similarity:Contains 3 Ig-like C2-type (immunoglobulin-like) domains.,tissue specificity:Detected in liver, skin, placenta, thymus and lung.,		

Validation Data



Western blot analysis of lysates from HpeG2 cells, primary antibody was diluted at 1:1000, 4°over night

Contact information

Orders: order@immunoway.com  
Support: tech@immunoway.com  
Telephone: 877-594-3616 (Toll Free), 408-747-0185  
Website: http://www.immunoway.com  
Address: 2200 Ringwood Ave San Jose, CA 95131 USA



Please scan the QR code  
to access additional  
product information:  
**IL1AP Rabbit pAb**

---

For Research Use Only. Not for Use in Diagnostic Procedures.

[Antibody](#) | [ELISA Kits](#) | [Protein](#) | [Reagents](#)