

MMP21 Rabbit pAb

CatalogNo: YN3211

| Key Features

Host Species

- Rabbit

Reactivity

- Human, Mouse

Applications

- WB

MW

- 60kD (Observed)

Isotype

- IgG

| Recommended Dilution Ratios

WB 1:500-2000

| Storage

Storage*

-15°C to -25°C/1 year (Do not lower than -25°C)

Formulation

Liquid in PBS containing 50% glycerol, 0.5% BSA and 0.02% sodium azide.

| Basic Information

Clonality

Polyclonal

| Immunogen Information

Immunogen

Synthesized peptide derived from human MMP21 AA range: 425-475

Specificity

This antibody detects endogenous levels of MMP21 at Human/Mouse

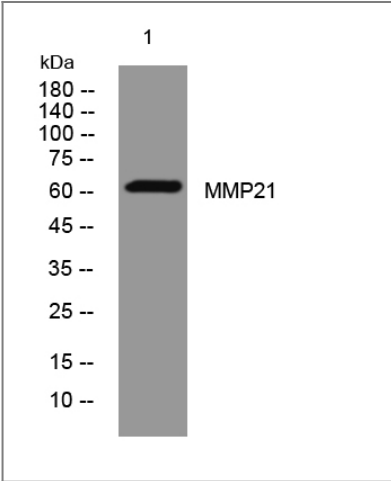
| Target Information

Gene name

MMP21

Protein Name	MMP21									
	<table><tr><th>Organism</th><th>Gene ID</th><th>UniProt ID</th></tr><tr><td>Human</td><td>118856;</td><td>Q8N119;</td></tr><tr><td>Mouse</td><td>214766;</td><td>Q8K3F2;</td></tr></table>	Organism	Gene ID	UniProt ID	Human	118856 ;	Q8N119 ;	Mouse	214766 ;	Q8K3F2 ;
Organism	Gene ID	UniProt ID								
Human	118856 ;	Q8N119 ;								
Mouse	214766 ;	Q8K3F2 ;								
Cellular Localization	Secreted .									
Tissue specificity	Identified in fetal brain, kidney and liver. In adult tissues found primarily in ovary, kidney, liver, lung, placenta, brain and peripheral blood leukocytes. Expressed as well in various cancer cell lines.									
Function	cofactor: Binds 1 zinc ion per subunit.,cofactor: Calcium.,Domain: The conserved cysteine present in the cysteine-switch motif binds the catalytic zinc ion, thus inhibiting the enzyme. The dissociation of the cysteine from the zinc ion upon the activation-peptide release activates the enzyme.,Function: May have an important and specific function in tumor progression and embryogenesis. Cleaves alpha-1-antitrypsin.,PTM: The precursor is cleaved by a furin endopeptidase.,similarity: Belongs to the peptidase M10A family.,similarity: Contains 4 hemopexin-like domains.,tissue specificity: Identified in fetal brain, kidney and liver. In adult tissues found primarily in ovary, kidney, liver, lung, placenta, brain and peripheral blood leukocytes. Expressed as well in various cancer cell lines.,									

Validation Data



Western blot analysis of lysates from SH-SY5Y cells, primary antibody was diluted at 1:1000, 4°over night

Contact information

Orders: order@immunoway.com
Support: tech@immunoway.com
Telephone: 877-594-3616 (Toll Free), 408-747-0185
Website: <http://www.immunoway.com>
Address: 2200 Ringwood Ave San Jose, CA 95131 USA



Please scan the QR code
to access additional
product information:
MMP21 Rabbit pAb

For Research Use Only. Not for Use in Diagnostic Procedures.

[Antibody](#) | [ELISA Kits](#) | [Protein](#) | [Reagents](#)