

LAT4 Rabbit pAb

CatalogNo: YN3209

| Key Features

Host Species

- Rabbit

Reactivity

- Human, Mouse

Applications

- WB

MW

- 60kD (Observed)

Isotype

- IgG

| Recommended Dilution Ratios

WB 1:500-2000

| Storage

Storage*

-15°C to -25°C/1 year (Do not lower than -25°C)

Formulation

Liquid in PBS containing 50% glycerol, 0.5% BSA and 0.02% sodium azide.

| Basic Information

Clonality

Polyclonal

| Immunogen Information

Immunogen

Synthesized peptide derived from human LAT4 AA range: 122-172

Specificity

This antibody detects endogenous levels of LAT4 at Human/Mouse

| Target Information

Gene name

SLC43A2 LAT4 PP7664

Protein Name LAT4

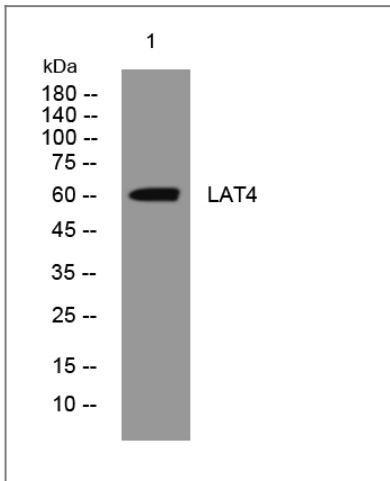
Organism	Gene ID	UniProt ID
Human	124935;	Q8N370;
Mouse	215113;	Q8CGA3;

Cellular Localization Membrane ; Multi-pass membrane protein .

Tissue specificity Detected in several tissues with higher expression in placenta, kidney and peripheral blood leukocytes. In the kidney, is detected in epithelial cells of the distal tubule and collecting duct. In the intestine, is expressed mainly in crypt cells of the intestinal microvilli and epithelial cells in the base of the villus.

Function Function:Sodium-, chloride, pH-independent high affinity transport of large neutral amino acids.,PTM:Glycosylated.,similarity:Belongs to the SLC43A transporter (TC 2.A.1.44) family.,tissue specificity:Detected in several tissues with, higher expression in placenta, kidney and peripheral blood leukocytes. In the kidney is detected in epithelial cells of the distal tubule and collecting duct. In the intestine is expressed mainly in crypt cells of the intestinal microvilli and epithelial cells in the base of the villus.,

Validation Data



Western blot analysis of lysates from HeLa cells, primary antibody was diluted at 1:1000, 4° over night

Contact information

Orders: order@immunoway.com
Support: tech@immunoway.com
Telephone: 877-594-3616 (Toll Free), 408-747-0185
Website: <http://www.immunoway.com>
Address: 2200 Ringwood Ave San Jose, CA 95131 USA



Please scan the QR code to access additional product information:
LAT4 Rabbit pAb

