

ZN675 Rabbit pAb

CatalogNo: YN3204

| Key Features

Host Species

- Rabbit

Reactivity

- Human

Applications

- WB

MW

- 60kD (Observed)

Isotype

- IgG

| Recommended Dilution Ratios

WB 1:500-2000

| Storage

Storage* -15°C to -25°C/1 year(Do not lower than -25°C)

Formulation Liquid in PBS containing 50% glycerol, 0.5% BSA and 0.02% sodium azide.

| Basic Information

Clonality Polyclonal

| Immunogen Information

Immunogen Synthesized peptide derived from human ZN675 AA range: 66-116

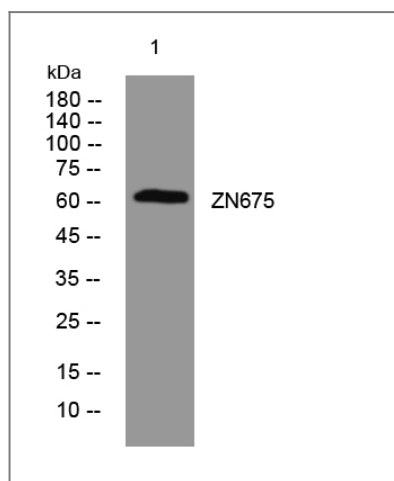
Specificity This antibody detects endogenous levels of ZN675 at Human

| Target Information

Gene name ZNF675 TIZ

Protein Name	ZN675		
	Organism	Gene ID	UniProt ID
	Human	171392;	Q8TD23;
Cellular Localization	Nucleus .		
Tissue specificity	Spleen,Thymus,		
Function	Function:May be involved in transcriptional regulation. May play a role during osteoclast differentiation by modulating TRAF6 signaling activity.,similarity:Contains 1 KRAB domain.,similarity:Contains 15 C2H2-type zinc fingers.,subunit:Interacts with TRAF6.,		

Validation Data



Western blot analysis of lysates from U2OS cells, primary antibody was diluted at 1:1000, 4°over night

Contact information

Orders: order@immunoway.com
 Support: tech@immunoway.com
 Telephone: 877-594-3616 (Toll Free), 408-747-0185
 Website: <http://www.immunoway.com>
 Address: 2200 Ringwood Ave San Jose, CA 95131 USA



Please scan the QR code to access additional product information:
ZN675 Rabbit pAb