

TAPT1 Rabbit pAb

CatalogNo: YN3191

Key Features

Host Species

- Rabbit

Reactivity

- Human, Mouse

Applications

- WB

MW

- 60kD (Observed)

Isotype

- IgG

Storage

Storage* -15°C to -25°C/1 year (Do not lower than -25°C)

Formulation Liquid in PBS containing 50% glycerol, 0.5% BSA and 0.02% sodium azide.

Recommended Dilution Ratios

WB 1:500-2000

Basic Information

Clonality Polyclonal

Immunogen Information

Immunogen Synthesized peptide derived from human TAPT1 AA range: 295-345

Specificity This antibody detects endogenous levels of TAPT1 at Human/Mouse

Target Information

Gene name TAPT1 CMVFR

Protein Name TAPT1

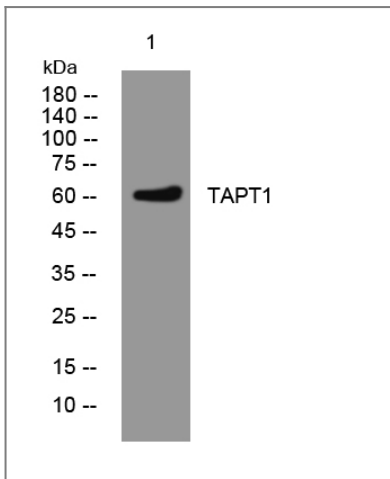
Organism	Gene ID	UniProt ID
Human	202018 ;	Q6NXT6 ;
Mouse	231225 ;	Q4VBD2 ;

Cellular Localization Cytoplasm, cytoskeleton, microtubule organizing center, centrosome . Cytoplasm, cytoskeleton, cilium basal body . Membrane ; Multi-pass membrane protein .

Tissue specificity Embryo,Lung,Testis,

Function Function:May act as a downstream effector of HOXC8 possibly by transducing or transmitting extracellular information required for axial skeletal patterning during development (By similarity). In case of infection, may act as a fusion receptor for cytomegalovirus (HCMV) strain AD169.,similarity:Belongs to the TAPT1 family.,

Validation Data



Western blot analysis of lysates from MCF-7 cells, primary antibody was diluted at 1:1000, 4° over night

Contact information

Orders: order@immunoway.com
Support: tech@immunoway.com
Telephone: 877-594-3616 (Toll Free), 408-747-0185
Website: <http://www.immunoway.com>
Address: 2200 Ringwood Ave San Jose, CA 95131 USA



Please scan the QR code to access additional product information:
TAPT1 Rabbit pAb