

## RANB3 Rabbit pAb

CatalogNo: YN3189

### Key Features

#### Host Species

- Rabbit

#### Reactivity

- Human, Mouse

#### Applications

- WB

#### MW

- 60kD (Observed)

#### Isotype

- IgG

### Recommended Dilution Ratios

WB 1:500-2000

### Storage

**Storage\*** -15°C to -25°C/1 year (Do not lower than -25°C)

**Formulation** Liquid in PBS containing 50% glycerol, 0.5% BSA and 0.02% sodium azide.

### Basic Information

**Clonality** Polyclonal

### Immunogen Information

**Immunogen** Synthesized peptide derived from human RANB3 AA range: 421-471

**Specificity** This antibody detects endogenous levels of RANB3 at Human/Mouse

### Target Information

**Gene name** RANBP3

**Protein Name** RANB3

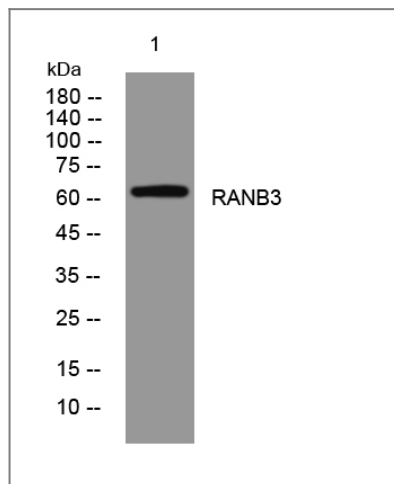
Organism	Gene ID	UniProt ID
Human	<a href="#">8498;</a>	<a href="#">Q9H6Z4;</a>
Mouse	<a href="#">71810;</a>	<a href="#">Q9CT10;</a>

**Cellular Localization** Cytoplasm . Nucleus .

**Tissue specificity** Widely expressed with high levels in testis and heart.

**Function** Function:Acts as a cofactor for XPO1/CRM1-mediated nuclear export, perhaps as export complex scaffolding protein. Bound to XPO1/CRM1, stabilizes the XPO1/CRM1-cargo interaction. In the absence of Ran-bound GTP prevents binding of XPO1/CRM1 to the nuclear pore complex. Binds to CHC1/RCC1 and increases the guanine nucleotide exchange activity of CHC1/RCC1. Recruits XPO1/CRM1 to CHC1/RCC1 in a Ran-dependent manner.,PTM:Phosphorylated upon DNA damage, probably by ATM or ATR.,similarity:Contains 1 RanBD1 domain.,subunit:Interacts with CHC1 in a Ran-stimulated manner. Interacts with XPO1.,tissue specificity:Widely expressed with high levels in testis and heart.,

## Validation Data



Western blot analysis of lysates from A549 cells, primary antibody was diluted at 1:1000, 4° over night

## Contact information

Orders: order@immunoway.com  
Support: tech@immunoway.com  
Telephone: 877-594-3616 (Toll Free), 408-747-0185  
Website: <http://www.immunoway.com>  
Address: 2200 Ringwood Ave San Jose, CA 95131 USA



Please scan the QR code to access additional product information:  
**RANB3 Rabbit pAb**

