

LCTL Rabbit pAb

CatalogNo: YN3185

Key Features

Host Species

- Rabbit

Reactivity

- Human, Mouse

Applications

- WB

MW

- 60kD (Observed)

Isotype

- IgG

Recommended Dilution Ratios

WB 1:500-2000

Storage

Storage* -15°C to -25°C/1 year (Do not lower than -25°C)

Formulation Liquid in PBS containing 50% glycerol, 0.5% BSA and 0.02% sodium azide.

Basic Information

Clonality Polyclonal

Immunogen Information

Immunogen Synthesized peptide derived from human LCTL AA range: 450-500

Specificity This antibody detects endogenous levels of LCTL at Human/Mouse

Target Information

Gene name LCTL KLPH UNQ3022/PRO9820

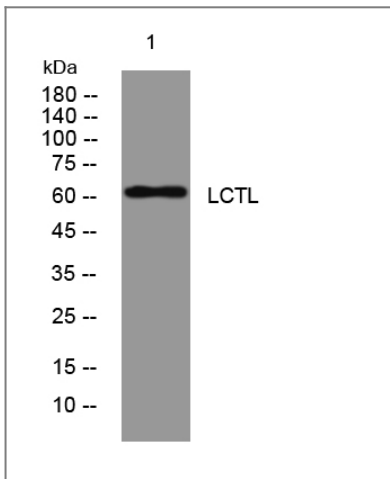
Protein Name LCTL

Organism	Gene ID	UniProt ID
Human	197021 ;	Q6UWM7 ;
Mouse	235435 ;	Q8K1F9 ;

Cellular Localization Endoplasmic reticulum membrane ; Single-pass membrane protein .

Function Caution:Probably inactive as a glycosidase since it lacks the essential active site Glu at position 201.,similarity:Belongs to the glycosyl hydrolase 1 family.,similarity:Belongs to the glycosyl hydrolase 1 family. Klotho subfamily.,

Validation Data



Western blot analysis of lysates from MCF-7 cells, primary antibody was diluted at 1:1000, 4°over night

Contact information

Orders: order@immunoway.com
Support: tech@immunoway.com
Telephone: 877-594-3616 (Toll Free), 408-747-0185
Website: <http://www.immunoway.com>
Address: 2200 Ringwood Ave San Jose, CA 95131 USA



Please scan the QR code to access additional product information:
LCTL Rabbit pAb