

## MUC21 Rabbit pAb

CatalogNo: YN3177

### Key Features

**Host Species**

- Rabbit

**Reactivity**

- Human

**Applications**

- WB

**MW**

- 60kD (Observed)

**Isotype**

- IgG

### Storage

**Storage\*** -15°C to -25°C/1 year(Do not lower than -25°C)**Formulation** Liquid in PBS containing 50% glycerol, 0.5% BSA and 0.02% sodium azide.

### Recommended Dilution Ratios

**WB 1:500-2000**

### Basic Information

**Clonality** Polyclonal

### Immunogen Information

**Immunogen** Synthesized peptide derived from human MUC21 AA range: 34-84**Specificity** This antibody detects endogenous levels of MUC21 at Human

### Target Information

**Gene name** MUC21 C6orf205 UNQ697/PRO1342

**Protein Name** MUC21

**Organism**

Human

**Gene ID**

[394263](#);

**UniProt ID**

[Q5SSG8](#);

**Cellular Localization**

Cell membrane ; Single-pass type I membrane protein ; Extracellular side .

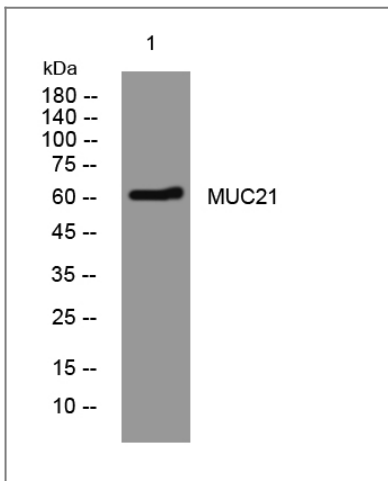
**Tissue specificity**

Expressed in lung, large intestine, thymus, and testis. Expressed in normal and malignant bronchial epithelial cells.

**Function**

miscellaneous:Could be considered as a marker for lung carcinomas.,PTM:O-glycosylated.,tissue specificity:Expressed in lung, large intestine, thymus, and testis. Expressed in normal and malignant bronchial epithelial cells.,

## Validation Data



Western blot analysis of lysates from Jurkat cells, primary antibody was diluted at 1:1000, 4° over night

## Contact information

Orders: [order@immunoway.com](mailto:order@immunoway.com)  
Support: [tech@immunoway.com](mailto:tech@immunoway.com)  
Telephone: 877-594-3616 (Toll Free), 408-747-0185  
Website: <http://www.immunoway.com>  
Address: 2200 Ringwood Ave San Jose, CA 95131 USA



Please scan the QR code to access additional product information:  
**MUC21 Rabbit pAb**