

UBP21 Rabbit pAb

CatalogNo: YN3171

| Key Features

Host Species

- Rabbit

Reactivity

- Human, Mouse, Rat

Applications

- WB

MW

- 60kD (Observed)

Isotype

- IgG

| Recommended Dilution Ratios

WB 1:500-2000

| Storage

Storage*

-15°C to -25°C/1 year (Do not lower than -25°C)

Formulation

Liquid in PBS containing 50% glycerol, 0.5% BSA and 0.02% sodium azide.

| Basic Information

Clonality

Polyclonal

| Immunogen Information

Immunogen

Synthesized peptide derived from human UBP21 AA range: 50-100

Specificity

This antibody detects endogenous levels of UBP21 at Human/Mouse/Rat

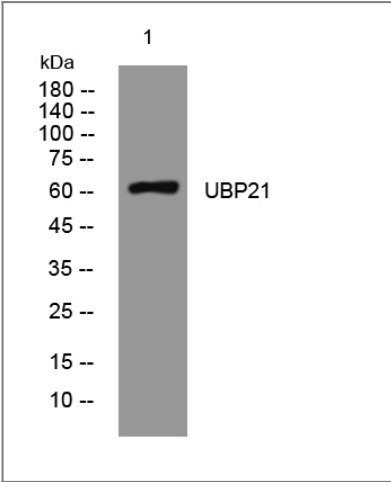
| Target Information

Gene name

USP21 USP23 PP1490

Protein Name	UBP21		
	Organism	Gene ID	UniProt ID
	Human	27005 ;	Q9UK80 ;
	Mouse	30941 ;	Q9QZL6 ;
	Rat	688466 ;	B2GUX4 ;
Cellular Localization	Cytoplasm . Nucleus .		
Tissue specificity	Highly expressed in heart, pancreas and skeletal muscle. Also expressed in brain, placenta, liver and kidney, and at very low level in lung.		
Function	Catalytic activity:Ubiquitin C-terminal thioester + H(2)O = ubiquitin + a thiol.,Function:Deubiquitinates histone H2A, a specific tag for epigenetic transcriptional repression, thereby acting as a coactivator. Deubiquitination of histone H2A releases the repression of di- and trimethylation of histone H3 at 'Lys-4', resulting in regulation of transcriptional initiation. Regulates gene expression via histone H2A deubiquitination (By similarity). Also capable of removing NEDD8 from NEDD8 conjugates but has no effect on Sentrin-1 conjugates.,similarity:Belongs to the peptidase C19 family. USP21 subfamily.,tissue specificity:Highly expressed in heart, pancreas and skeletal muscle. Also expressed in brain, placenta, liver and kidney, and at very low level in lung.,		

Validation Data



Western blot analysis of lysates from Hela cells, primary antibody was diluted at 1:1000, 4°over night

Contact information

Orders: order@immunoway.com
Support: tech@immunoway.com
Telephone: 877-594-3616 (Toll Free), 408-747-0185
Website: http://www.immunoway.com
Address: 2200 Ringwood Ave San Jose, CA 95131 USA



Please scan the QR code
to access additional
product information:
UBP21 Rabbit pAb

For Research Use Only. Not for Use in Diagnostic Procedures.

[Antibody](#) | [ELISA Kits](#) | [Protein](#) | [Reagents](#)