

## MER34 Rabbit pAb

CatalogNo: YN3151

### Key Features

#### Host Species

- Rabbit

#### Reactivity

- Human

#### Applications

- WB

#### MW

- 60kD (Observed)

#### Isotype

- IgG

### Recommended Dilution Ratios

WB 1:500-2000

### Storage

#### Storage\*

-15°C to -25°C/1 year(Do not lower than -25°C)

#### Formulation

Liquid in PBS containing 50% glycerol, 0.5% BSA and 0.02% sodium azide.

### Basic Information

#### Clonality

Polyclonal

### Immunogen Information

#### Immunogen

Synthesized peptide derived from human MER34 AA range: 391-441

#### Specificity

This antibody detects endogenous levels of MER34 at Human

### Target Information

#### Gene name

ERVMER34-1 LP9056

**Protein Name** MER34

**Organism**

Human

**Gene ID**

[100288413](#);

**UniProt ID**

[Q9H9K5](#);

**Cellular  
Localization**

[Endogenous retroviral envelope protein HEMO]: Cell membrane ; Single-pass type I membrane protein . This uncleaved form present at the cell surface represents the major form (PubMed:28739914). .; [Endogenous retroviral envelope protein HEMO, secreted form]: Secreted . This secreted form, which is released in the extracellular medium following cleavage, constitutes a minor form (PubMed:28739914). .

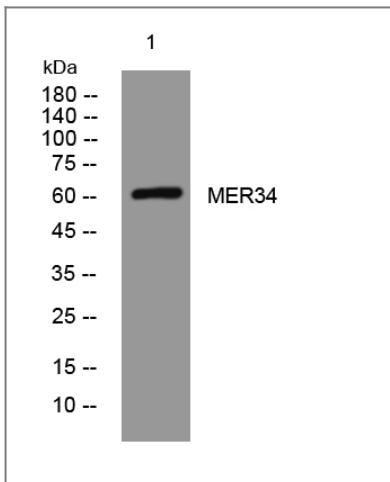
**Tissue specificity**

Expressed at high level in the placenta and stem cells (at protein level) (PubMed:28739914). Also expressed in the kidney but at a lower level (PubMed:28739914). Endogenous retroviral envelope protein HEMO, secreted form: Present in the blood of pregnant women (at protein level) (PubMed:28739914).

**Function**

Function:Retroviral envelope proteins mediate receptor recognition and membrane fusion during early infection. Endogenous envelope proteins may have kept, lost or modified their original function during evolution.,similarity:Belongs to the gamma type-C retroviral envelope protein family.,

## Validation Data



Western blot analysis of lysates from HeLa cells, primary antibody was diluted at 1:1000, 4° over night

## Contact information

Orders: [order@immunoway.com](mailto:order@immunoway.com)  
Support: [tech@immunoway.com](mailto:tech@immunoway.com)  
Telephone: 877-594-3616 (Toll Free), 408-747-0185  
Website: <http://www.immunoway.com>  
Address: 2200 Ringwood Ave San Jose, CA 95131 USA



Please scan the QR code to access additional product information:  
**MER34 Rabbit pAb**

