

PI51A Rabbit pAb

CatalogNo: YN3141

| Key Features

Host Species

- Rabbit

Reactivity

- Human, Mouse

Applications

- WB

MW

- 60kD (Observed)

Isotype

- IgG

| Recommended Dilution Ratios

WB 1:500-2000

| Storage

Storage*

-15°C to -25°C/1 year (Do not lower than -25°C)

Formulation

Liquid in PBS containing 50% glycerol, 0.5% BSA and 0.02% sodium azide.

| Basic Information

Clonality

Polyclonal

| Immunogen Information

Immunogen

Synthesized peptide derived from human PI51A AA range: 270-320

Specificity

This antibody detects endogenous levels of PI51A at Human/Mouse

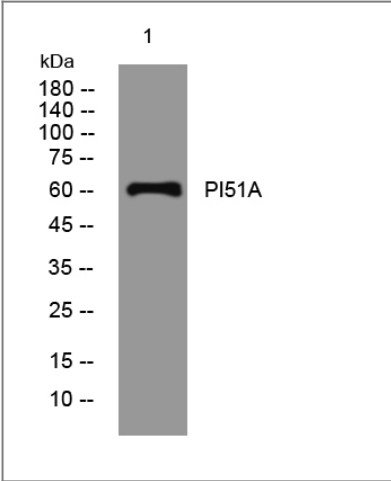
| Target Information

Gene name

PIP5K1A

Protein Name	PI51A		
	Organism	Gene ID	UniProt ID
	Human	8394;	Q99755;
	Mouse	18720;	P70182;
Cellular Localization	Cell membrane . Cytoplasm . Nucleus . Nucleus speckle . Cell projection, ruffle . Cell projection, lamellipodium . Colocalizes with RAC1 at actin-rich membrane ruffles (PubMed:20660631). Localizes to nuclear speckles and associates with TUT1 to regulate polyadenylation of selected mRNAs (PubMed:18288197). .		
Tissue specificity	Highly expressed in heart, placenta, skeletal muscle, kidney and pancreas. Detected at lower levels in brain, lung and liver.		
Function	Catalytic activity:ATP + 1-phosphatidyl-1D-myo-inositol 4-phosphate = ADP + 1-phosphatidyl-1D-myo-inositol 4,5-bisphosphate.,Function:Participates in the biosynthesis of phosphatidylinositol-4,5-bisphosphate. Mediates RAC1-dependent reorganization of actin filaments. Contributes to the activation of PLD2.,similarity:Contains 1 PI5K domain.,subcellular location:Associated with the plasma membrane and with internal membranes. Associated with Golgi stacks (By similarity). Detected on RAC1-induced plasma membrane ruffles, and on membrane ruffles induced by platelet-derived growth factor.,subunit:Interacts with ARF1, RAC1, PLD1, PLD2 and JUB.,tissue specificity:Highly expressed in heart, placenta, skeletal muscle, kidney and pancreas. Detected at lower levels in brain, lung and liver.,		

Validation Data



Western blot analysis of lysates from AD293 cells, primary antibody was diluted at 1:1000, 4°over night

Contact information

Orders: order@immunoway.com
Support: tech@immunoway.com
Telephone: 877-594-3616 (Toll Free), 408-747-0185
Website: <http://www.immunoway.com>
Address: 2200 Ringwood Ave San Jose, CA 95131 USA



Please scan the QR code
to access additional
product information:
PI51A Rabbit pAb

For Research Use Only. Not for Use in Diagnostic Procedures.

[Antibody](#) | [ELISA Kits](#) | [Protein](#) | [Reagents](#)