

CC155 Rabbit pAb

CatalogNo: YN3136

| Key Features

Host Species

- Rabbit

Reactivity

- Human, Mouse

Applications

- WB

MW

- 60kD (Observed)

Isotype

- IgG

| Recommended Dilution Ratios

WB 1:500-2000

| Storage

Storage*

-15°C to -25°C/1 year (Do not lower than -25°C)

Formulation

Liquid in PBS containing 50% glycerol, 0.5% BSA and 0.02% sodium azide.

| Basic Information

Clonality

Polyclonal

| Immunogen Information

Immunogen

Synthesized peptide derived from human CC155 AA range: 299-349

Specificity

This antibody detects endogenous levels of CC155 at Human

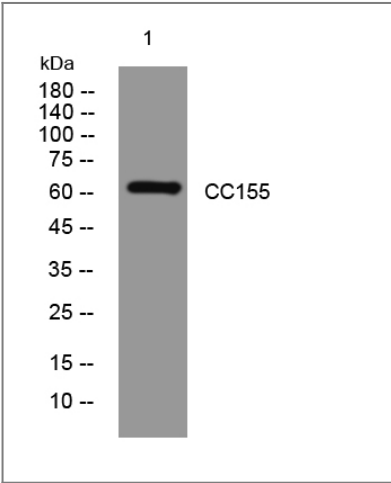
| Target Information

Gene name

CCDC155

Protein Name	CC155		
	Organism	Gene ID	UniProt ID
	Human	147872;	Q8N6L0;
Cellular Localization	Nucleus outer membrane ; Single-pass type IV membrane protein ; Cytoplasmic side . Nucleus . Chromosome, telomere . Localized exclusively at telomeres from the leptotene to diplotene stages. Colocalizes with SUN2 at sites of telomere attachment in meiocytes. At oocyte MI stage localized around the spindle, at MII stage localized to the spindle poles. .		
Tissue specificity	Brain,Testis,		

Validation Data



Western blot analysis of lysates from HCT116 cells, primary antibody was diluted at 1:1000, 4°over night

Contact information

Orders: order@immunoway.com
 Support: tech@immunoway.com
 Telephone: 877-594-3616 (Toll Free), 408-747-0185
 Website: <http://www.immunoway.com>
 Address: 2200 Ringwood Ave San Jose, CA 95131 USA



Please scan the QR code to access additional product information:
CC155 Rabbit pAb