

## EFS Rabbit pAb

CatalogNo: YN3128

### Key Features

#### Host Species

- Rabbit

#### Reactivity

- Human, Mouse

#### Applications

- WB

#### MW

- 60kD (Observed)

#### Isotype

- IgG

### Storage

**Storage\*** -15°C to -25°C/1 year (Do not lower than -25°C)

**Formulation** Liquid in PBS containing 50% glycerol, 0.5% BSA and 0.02% sodium azide.

### Recommended Dilution Ratios

**WB 1:500-2000**

### Basic Information

**Clonality** Polyclonal

### Immunogen Information

**Immunogen** Synthesized peptide derived from human EFS AA range: 108-158

**Specificity** This antibody detects endogenous levels of EFS at Human/Mouse

### Target Information

**Gene name** EFS CASS3

**Protein Name** EFS

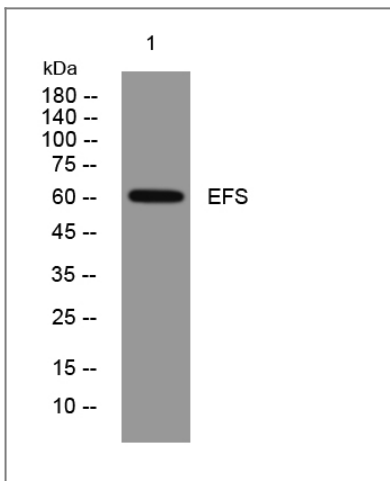
Organism	Gene ID	UniProt ID
Human	<a href="#">10278;</a>	<a href="#">O43281;</a>
Mouse	<a href="#">13644;</a>	<a href="#">Q64355;</a>

**Cellular Localization** cytoplasm,

**Tissue specificity** The protein has been detected in lung and placenta.

**Function** Domain:Contains a central domain (substrate domain) containing multiple potential SH2-binding sites and a C-terminal domain containing a divergent helix-loop-helix (HLH) motif. The SH2-binding sites putatively bind CRK, NCK and ABL SH2 domains.,Domain:The SH3-binding sites that bind to the SRC SH3 domain are required for interaction with CRK and are implicated in promotion of serum response element (SRE) activation. The SH3 domain interacts with focal adhesion kinase 1.,Function:Docking protein which plays a central coordinating role for tyrosine-kinase-based signaling related to cell adhesion. May serve as an activator of SRC and a downstream effector. Interacts with the SH3 domain of FYN and with CRK, SRC, and YES.,PTM:Phosphorylated on multiple tyrosine residues. Phosphorylated on tyrosines by FYN and SRC.,similarity:Belongs to the CAS family.,similarity:Contains 1 SH3 domain.,tissue specificity:The protein has been detected in lung and placenta.,

## Validation Data



Western blot analysis of lysates from SH-SY5Y cells, primary antibody was diluted at 1:1000, 4° over night

## Contact information

Orders: [order@immunoway.com](mailto:order@immunoway.com)  
Support: [tech@immunoway.com](mailto:tech@immunoway.com)  
Telephone: 877-594-3616 (Toll Free), 408-747-0185  
Website: <http://www.immunoway.com>  
Address: 2200 Ringwood Ave San Jose, CA 95131 USA



Please scan the QR code to access additional product information:  
**EFS Rabbit pAb**

