

ARI3B Rabbit pAb

CatalogNo: YN3125

Key Features

Host Species

- Rabbit

Reactivity

- Human, Mouse

Applications

- WB

MW

- 60kD (Observed)

Isotype

- IgG

Recommended Dilution Ratios

WB 1:500-2000

Storage

Storage* -15°C to -25°C/1 year (Do not lower than -25°C)

Formulation Liquid in PBS containing 50% glycerol, 0.5% BSA and 0.02% sodium azide.

Basic Information

Clonality Polyclonal

Immunogen Information

Immunogen Synthesized peptide derived from human ARI3B AA range: 459-509

Specificity This antibody detects endogenous levels of ARI3B at Human/Mouse

Target Information

Gene name ARID3B BDP DRIL2

Protein Name ARI3B

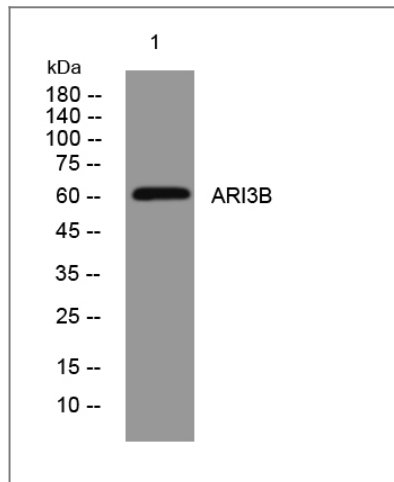
Organism	Gene ID	UniProt ID
Human	10620;	Q8IVW6;
Mouse	56380;	Q9Z1N7;

Cellular Localization Nucleus .

Tissue specificity Expressed in placenta, testis and leukocytes. Expressed in neuroblastoma. Present in K-562 erythrocytic leukemia cell line (at protein level).

Function Function:Transcription factor which may be involved in neuroblastoma growth and malignant transformation. Favors nuclear targeting of ARID3A.,similarity:Contains 1 ARID domain.,subunit:Heterodimer with ARID3A. Interacts with unphosphorylated RB1.,tissue specificity:Expressed in placenta, testis and leukocytes. Expressed in neuroblastoma. Present in K562 erythrocytic leukemia cells (at protein level).,

Validation Data



Western blot analysis of lysates from HpeG2 cells, primary antibody was diluted at 1:1000, 4°over night

Contact information

Orders: order@immunoway.com
Support: tech@immunoway.com
Telephone: 877-594-3616 (Toll Free), 408-747-0185
Website: <http://www.immunoway.com>
Address: 2200 Ringwood Ave San Jose, CA 95131 USA



Please scan the QR code to access additional product information:
ARI3B Rabbit pAb

