

OSGI1 Rabbit pAb

CatalogNo: YN3119

| Key Features

Host Species

- Rabbit

Reactivity

- Human, Mouse

Applications

- WB

MW

- 60kD (Observed)

Isotype

- IgG

| Recommended Dilution Ratios

WB 1:500-2000

| Storage

Storage*

-15°C to -25°C/1 year (Do not lower than -25°C)

Formulation

Liquid in PBS containing 50% glycerol, 0.5% BSA and 0.02% sodium azide.

| Basic Information

Clonality

Polyclonal

| Immunogen Information

Immunogen

Synthesized peptide derived from human OSGI1 AA range: 276-326

Specificity

This antibody detects endogenous levels of OSGI1 at Human

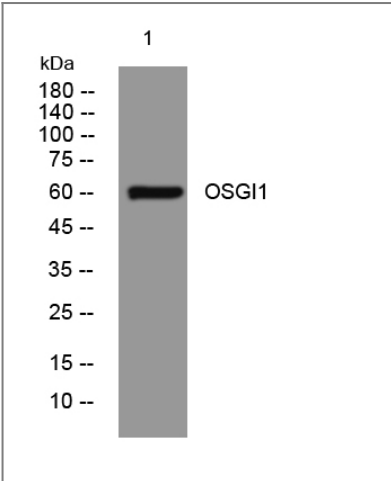
| Target Information

Gene name

OSGIN1 OKL38

Protein Name	OSGI1		
	Organism	Gene ID	UniProt ID
	Human	29948 ;	Q9UJX0 ;
Tissue specificity	Ubiquitous. Highest expression in the ovary, testis, kidney, skeletal muscle and liver (PubMed:11459809, PubMed:14570898, PubMed:15569677). Weakly expressed in spleen, heart, kidney, and pancreas (PubMed:15569677). Highly expressed in tumor cells (at protein level) (PubMed:15569677).		
Function	Function:Regulates the differentiation and proliferation of normal cells through the regulation of cell death.,induction:By pregnancy.,miscellaneous:Loss of OSGIN1 protein disturbs the balance between cell growth, differentiation, and cell death in normal tissue, resulting in uncontrolled growth and formation of tumors.,similarity:Belongs to the OKL38 family.,tissue specificity:Ubiquitous. Highest expression in the ovary, testis, kidney, and liver.,		

Validation Data



Western blot analysis of lysates from HpeG2 cells, primary antibody was diluted at 1:1000, 4°over night

Contact information

Orders: order@immunoway.com
Support: tech@immunoway.com
Telephone: 877-594-3616 (Toll Free), 408-747-0185
Website: http://www.immunoway.com
Address: 2200 Ringwood Ave San Jose, CA 95131 USA



Please scan the QR code to access additional product information:
OSGI1 Rabbit pAb