

## PPR42 Rabbit pAb

CatalogNo: YN3113

### | Key Features

#### Host Species

- Rabbit

#### Reactivity

- Human, Mouse

#### Applications

- WB

#### MW

- 38kD (Observed)

#### Isotype

- IgG

### | Recommended Dilution Ratios

WB 1:500-2000

### | Storage

#### Storage\*

-15°C to -25°C/1 year (Do not lower than -25°C)

#### Formulation

Liquid in PBS containing 50% glycerol, 0.5% BSA and 0.02% sodium azide.

### | Basic Information

#### Clonality

Polyclonal

### | Immunogen Information

#### Immunogen

Synthesized peptide derived from human PPR42 AA range: 4-54

#### Specificity

This antibody detects endogenous levels of PPR42 at Human/Mouse

### | Target Information

#### Gene name

PPP1R42 LRRC67

**Protein Name** PPR42

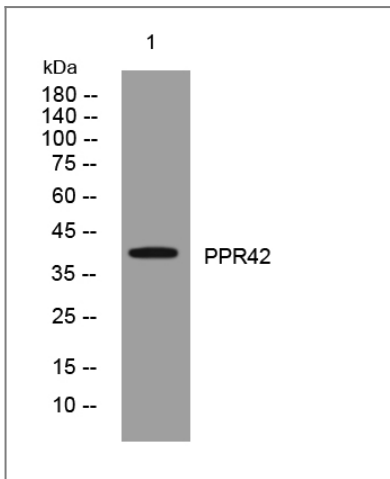
Organism	Gene ID	UniProt ID
Human	<a href="#">286187;</a>	<a href="#">Q7Z4L9;</a>
Mouse	<a href="#">69312;</a>	<a href="#">Q8R1Z4;</a>

**Cellular Localization** Cytoplasm, cytoskeleton . Cytoplasm, cytoskeleton, microtubule organizing center, centrosome . Colocalizes with alpha tubulin to the manchette of developing spermatids. Detected to nuclear rim in pachytene spermatocytes. Detected at nuclear surface, opposite the acrosome in elongating spermatids. Detected at the microtubule-organizing center (MTOC). Localized to the centrosomal region of late-stage spermatids (By similarity). .

**Tissue specificity** Testis,

**Function** similarity:Contains 6 LRR (leucine-rich) repeats.,

## Validation Data



Western blot analysis of lysates from HuvEc cells, primary antibody was diluted at 1:1000, 4° over night

## Contact information

Orders: order@immunoway.com  
Support: tech@immunoway.com  
Telephone: 877-594-3616 (Toll Free), 408-747-0185  
Website: <http://www.immunoway.com>  
Address: 2200 Ringwood Ave San Jose, CA 95131 USA



Please scan the QR code to access additional product information:  
**PPR42 Rabbit pAb**