

GNAI2 Rabbit pAb

CatalogNo: YN3110

| Key Features

Host Species

- Rabbit

Reactivity

- Human, Mouse, Rat

Applications

- WB

MW

- 38kD (Observed)

Isotype

- IgG

| Recommended Dilution Ratios

WB 1:500-2000

| Storage

Storage*

-15°C to -25°C/1 year (Do not lower than -25°C)

Formulation

Liquid in PBS containing 50% glycerol, 0.5% BSA and 0.02% sodium azide.

| Basic Information

Clonality

Polyclonal

| Immunogen Information

Immunogen

Synthesized peptide derived from human GNAI2 AA range: 274-324

Specificity

This antibody detects endogenous levels of GNAI2 at Human/Mouse/Rat

| Target Information

Gene name

GNAI2 GNAI2B

Protein Name GNAI2

Organism	Gene ID	UniProt ID
Human	2771 ;	P04899 ;
Mouse	14678 ;	P08752 ;
Rat	81664 ;	P04897 ;

Cellular Localization

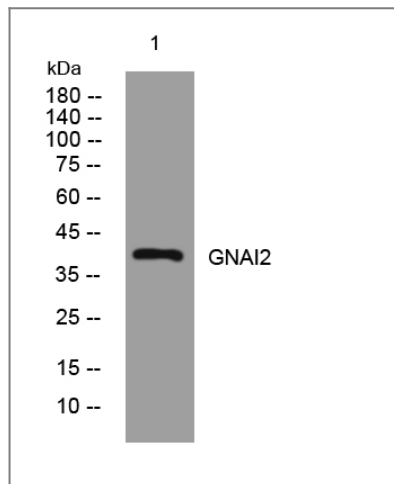
Cytoplasm . Cytoplasm, cytoskeleton, microtubule organizing center, centrosome . Cell membrane . Membrane ; Lipid-anchor . Localizes in the centrosomes of interphase and mitotic cells. Detected at the cleavage furrow and/or the midbody.

Tissue specificity Brain,Cerebellum,Kidney,Lung,Mammary gland,Testis,

Function

Function:Guanine nucleotide-binding proteins (G proteins) are involved as modulators or transducers in various transmembrane signaling systems. The G(i) proteins are involved in hormonal regulation of adenylate cyclase: they inhibit the cyclase in response to beta-adrenergic stimuli.,similarity:Belongs to the G-alpha family. G(i/o/t/z) subfamily.,subunit:G proteins are composed of 3 units; alpha, beta and gamma. The alpha chain contains the guanine nucleotide binding site. Interacts with GPSM1 (By similarity). Interacts with UNC5B.,

Validation Data



Western blot analysis of lysates from HpeG2 cells, primary antibody was diluted at 1:1000, 4°over night

Contact information

Orders: order@immunoway.com
Support: tech@immunoway.com
Telephone: 877-594-3616 (Toll Free), 408-747-0185
Website: <http://www.immunoway.com>
Address: 2200 Ringwood Ave San Jose, CA 95131 USA



Please scan the QR code to access additional product information:
GNAI2 Rabbit pAb

