

ATX3L Rabbit pAb

CatalogNo: YN3106

| Key Features

Host Species

- Rabbit

Reactivity

- Human

Applications

- WB

MW

- 38kD (Observed)

Isotype

- IgG

| Recommended Dilution Ratios

WB 1:500-2000

| Storage

Storage* -15°C to -25°C/1 year(Do not lower than -25°C)

Formulation Liquid in PBS containing 50% glycerol, 0.5% BSA and 0.02% sodium azide.

| Basic Information

Clonality Polyclonal

| Immunogen Information

Immunogen Synthesized peptide derived from human ATX3L AA range: 99-149

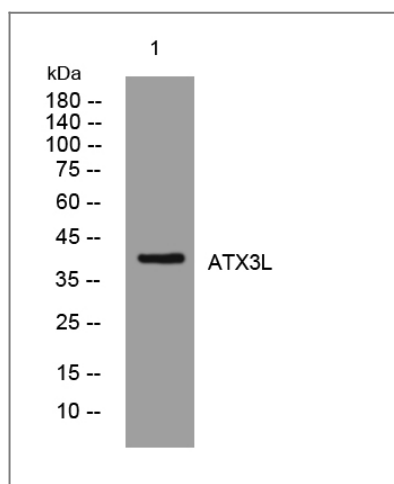
Specificity This antibody detects endogenous levels of ATX3L at Human

| Target Information

Gene name ATXN3L ATX3L MJDL

Protein Name	ATX3L		
	Organism	Gene ID	UniProt ID
	Human	92552 ;	Q9H3M9 ;
Cellular Localization	Nucleus .		
Tissue specificity	Testis,		
Function	Caution:Could be the product of a pseudogene. Suggested by the absence of intron.,Function:May bind to histones and regulate transcription. May act as a deubiquitinating enzyme.,similarity:Contains 1 Josephin domain.,similarity:Contains 2 UIM (ubiquitin-interacting motif) repeats.,		

Validation Data



Western blot analysis of lysates from SW480 cells, primary antibody was diluted at 1:1000, 4° over night

Contact information

Orders: order@immunoway.com
 Support: tech@immunoway.com
 Telephone: 877-594-3616 (Toll Free), 408-747-0185
 Website: <http://www.immunoway.com>
 Address: 2200 Ringwood Ave San Jose, CA 95131 USA



Please scan the QR code to access additional product information:
ATX3L Rabbit pAb