

MBNL3 Rabbit pAb

CatalogNo: YN3100

Key Features

Host Species

- Rabbit

Reactivity

- Human, Mouse

Applications

- WB

MW

- 38kD (Observed)

Isotype

- IgG

Recommended Dilution Ratios

WB 1:500-2000

Storage

Storage* -15°C to -25°C/1 year (Do not lower than -25°C)

Formulation Liquid in PBS containing 50% glycerol, 0.5% BSA and 0.02% sodium azide.

Basic Information

Clonality Polyclonal

Immunogen Information

Immunogen Synthesized peptide derived from human MBNL3 AA range: 184-234

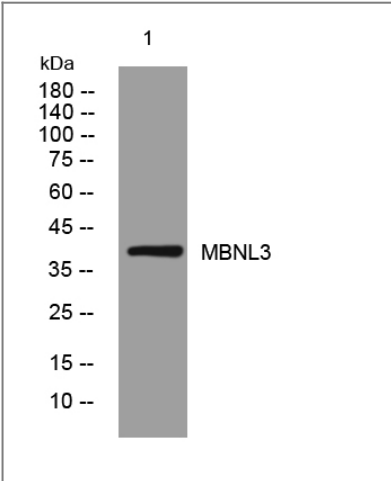
Specificity This antibody detects endogenous levels of MBNL3 at Human/Mouse

Target Information

Gene name MBNL3 CHCR MBLX39 MBXL

| | | | |
|------------------------------|--|-------------------------|-------------------------|
| Protein Name | MBNL3 | | |
| | Organism | Gene ID | UniProt ID |
| | Human | 55796; | Q9NUK0; |
| | Mouse | 171170; | Q8R003; |
| Cellular Localization | Nucleus . Cytoplasm . Greater concentration in the nucleus. In both DM1 and DM2 patients, colocalizes with nuclear foci of retained expanded-repeat transcripts. | | |
| Tissue specificity | Highly expressed in the placenta. | | |
| Function | Function:Could inhibit terminal muscle differentiation, acting at approximately the time of myogenin induction.,similarity:Belongs to the muscleblind family.,similarity:Contains 4 C3H1-type zinc fingers.,subcellular location:Greater concentration in the nucleus. In both myotonic dystrophy 1 (DM1) and DM2 patients, colocalizes with nuclear foci of retained expanded-repeat transcripts.,tissue specificity:Highly expressed in the placenta., | | |

| Validation Data



Western blot analysis of lysates from KB cells, primary antibody was diluted at 1:1000, 4°over night

| Contact information

Orders: order@immunoway.com
Support: tech@immunoway.com
Telephone: 877-594-3616 (Toll Free), 408-747-0185
Website: http://www.immunoway.com
Address: 2200 Ringwood Ave San Jose, CA 95131 USA



Please scan the QR code to access additional product information:
MBNL3 Rabbit pAb