

CREL2 Rabbit pAb

CatalogNo: YN3074

Key Features

Host Species

- Rabbit

Reactivity

- Human, Mouse, Rat

Applications

- WB

MW

- 38kD (Observed)

Isotype

- IgG

Storage

Storage* -15°C to -25°C/1 year (Do not lower than -25°C)

Formulation Liquid in PBS containing 50% glycerol, 0.5% BSA and 0.02% sodium azide.

Recommended Dilution Ratios

WB 1:500-2000

Basic Information

Clonality Polyclonal

Immunogen Information

Immunogen Synthesized peptide derived from human CREL2 AA range: 257-307

Specificity This antibody detects endogenous levels of CREL2 at Human/Mouse/Rat

Target Information

Gene name CRELD2 UNQ185/PRO211

Protein Name CREL2

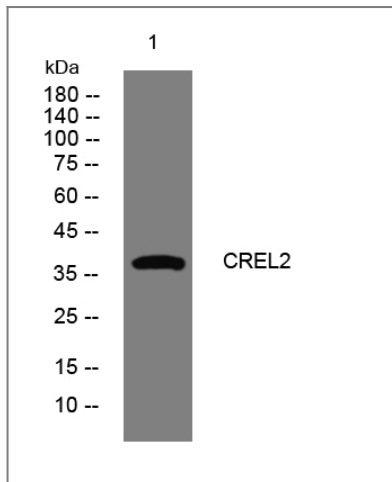
Organism	Gene ID	UniProt ID
Human	79174;	Q6UXH1;
Mouse	76737;	Q9CYA0;
Rat	362978;	Q4G063;

Cellular Localization Endoplasmic reticulum .

Tissue specificity Ubiquitously expressed (PubMed:16238698). Highly expressed in skeletal muscle, heart, liver, kidney and placenta (PubMed:16238698).

Function developmental stage:Expressed in all fetal tissues tested.,Function:May regulate transport of alpha4-beta2 neuronal acetylcholine receptor.,similarity:Belongs to the CRELD family.,similarity:Contains 2 EGF-like domains.,similarity:Contains 2 FU (furin-like) repeats.,subunit:May interact with CHRNA4.,tissue specificity:Ubiquitously expressed.,

Validation Data



Western blot analysis of lysates from MCF-7 cells, primary antibody was diluted at 1:1000, 4° over night

Contact information

Orders: order@immunoway.com
Support: tech@immunoway.com
Telephone: 877-594-3616 (Toll Free), 408-747-0185
Website: <http://www.immunoway.com>
Address: 2200 Ringwood Ave San Jose, CA 95131 USA



Please scan the QR code to access additional product information:
CREL2 Rabbit pAb

