

PRS55 Rabbit pAb

CatalogNo: YN3066

Key Features

Host Species

- Rabbit

Reactivity

- Human, Mouse

Applications

- WB

MW

- 38kD (Observed)

Isotype

- IgG

Recommended Dilution Ratios

WB 1:500-2000

Storage

Storage* -15°C to -25°C/1 year (Do not lower than -25°C)

Formulation Liquid in PBS containing 50% glycerol, 0.5% BSA and 0.02% sodium azide.

Basic Information

Clonality Polyclonal

Immunogen Information

Immunogen Synthesized peptide derived from human PRS55 AA range: 173-223

Specificity This antibody detects endogenous levels of PRS55 at Human/Mouse

Target Information

Gene name PRSS55 UNQ9391/PRO34284

Protein Name PRS55

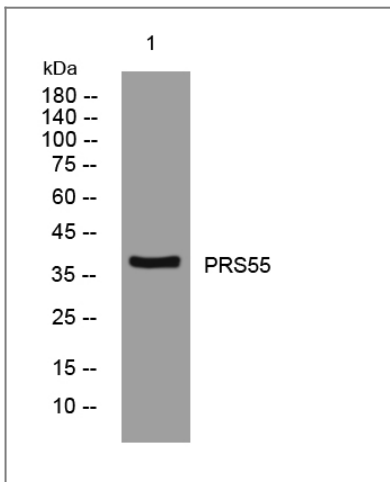
Organism	Gene ID	UniProt ID
Human	203074 ;	Q6UWB4 ;
Mouse		Q14BX2 ;

Cellular Localization [Isoform 1]: Cell membrane ; Lipid-anchor, GPI-anchor . Cytoplasm, cytosol . Mainly found in the membrane part of the cells and only in small amounts in the cytosol. . ; [Isoform 2]: Cytoplasm, cytosol . Present primarily in the cytosol and only in minor amounts in the membrane fraction. .

Tissue specificity Only detected in testis. Expressed in spermatogonia, spermatocytes, spermatids, Leydig and Sertoli cells. Expressed in prostate cancer and ovarian cancer (at protein level).

Function Function:Probable serine protease.,similarity:Belongs to the peptidase S1 family.,similarity:Contains 1 peptidase S1 domain.,

Validation Data



Western blot analysis of lysates from HpeG2 cells, primary antibody was diluted at 1:1000, 4° over night

Contact information

Orders: order@immunoway.com
Support: tech@immunoway.com
Telephone: 877-594-3616 (Toll Free), 408-747-0185
Website: <http://www.immunoway.com>
Address: 2200 Ringwood Ave San Jose, CA 95131 USA



Please scan the QR code to access additional product information:
PRS55 Rabbit pAb