

PDLI2 Rabbit pAb

CatalogNo: YN3064

Key Features

Host Species

- Rabbit

Reactivity

- Human, Mouse, Rat

Applications

- WB

MW

- 38kD (Observed)

Isotype

- IgG

Recommended Dilution Ratios

WB 1:500-2000

Storage

Storage*

-15°C to -25°C/1 year (Do not lower than -25°C)

Formulation

Liquid in PBS containing 50% glycerol, 0.5% BSA and 0.02% sodium azide.

Basic Information

Clonality

Polyclonal

Immunogen Information

Immunogen

Synthesized peptide derived from human PDLI2 AA range: 190-240

Specificity

This antibody detects endogenous levels of PDLI2 at Human/Mouse/Rat

Target Information

Gene name

PDLIM2 PP6345

Protein Name

PDLI2

Organism**Gene ID****UniProt ID**

Human

[64236;](#)[Q96JY6;](#)

Mouse

[213019;](#)[Q8R1G6;](#)

Rat

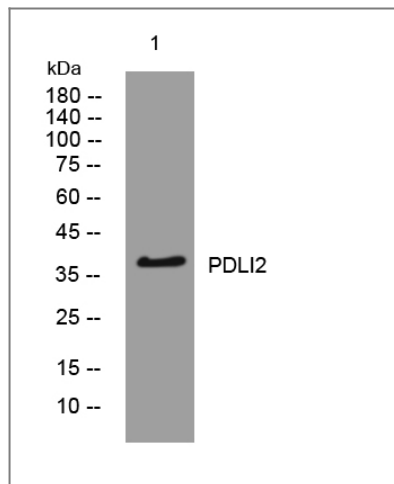
[290354;](#)[Q6AYD6;](#)**Cellular Localization**

Cytoplasm . Nucleus . May be partially nuclear.; [Isoform 1]: Cytoplasm, cytoskeleton. Colocalizes with beta-1 integrin (ITGB1) and alpha-actinin but not with paxillin (PXN).; [Isoform 2]: Cytoplasm, cytoskeleton.; [Isoform 3]: Nucleus.

Tissue specificity Epithelium,Hypothalamus,Placenta,Spleen,**Function**

Function:Probable adapter protein located at the actin cytoskeleton that promotes cell attachment. Necessary for the migratory capacity of epithelial cells. Overexpression enhances cell adhesion to collagen and fibronectin and suppresses anchorage independent growth. May contribute to tumor cell migratory capacity.,similarity:Contains 1 LIM zinc-binding domain.,similarity:Contains 1 PDZ (DHR) domain.,subcellular location:Colocalizes with beta-1 integrin (ITGB1) and alpha-actinin but not with paxillin (PXN).,subcellular location:May be partially nuclear.,subunit:Interacts with alpha-actinins ACTN1 and ACTN4, FLNA and MYH9.,

Validation Data



Western blot analysis of lysates from 293T cells, primary antibody was diluted at 1:1000, 4° over night

Contact information

Orders: order@immunoway.com
Support: tech@immunoway.com
Telephone: 877-594-3616 (Toll Free), 408-747-0185
Website: <http://www.immunoway.com>
Address: 2200 Ringwood Ave San Jose, CA 95131 USA



Please scan the QR code to access additional product information:
PDLI2 Rabbit pAb

