

CALCOCO2 Rabbit pAb

CatalogNo: YN3044

| Key Features

Host Species

- Rabbit

Reactivity

- Human, Mouse, Rat

Applications

- WB, IF

MW

- 53kD (Observed)

Isotype

- IgG

| Recommended Dilution Ratios

WB 1:500-2000

IF 1:200-1:1000

| Storage

Storage*

-15°C to -25°C/1 year (Do not lower than -25°C)

Formulation

Liquid in PBS containing 50% glycerol, 0.5% BSA and 0.02% sodium azide.

| Basic Information

Clonality

Polyclonal

| Immunogen Information

Immunogen

Synthesized peptide derived from human CALCOCO2

Specificity

This antibody detects endogenous levels of CALCOCO2 at Human/Mouse/Rat

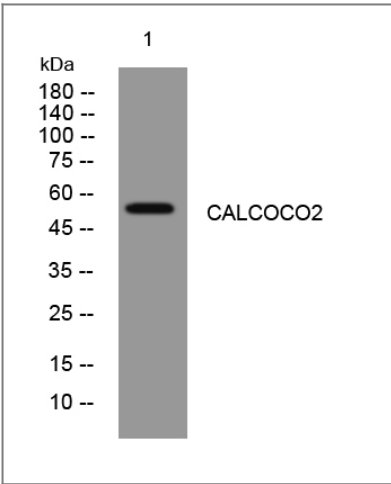
| Target Information

Gene name

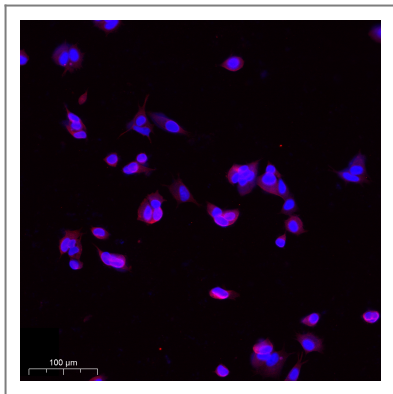
CALCOCO2 NDP52

Protein Name	CALCOCO2		
	Organism	Gene ID	UniProt ID
	Human	10241;	Q13137;
	Mouse	76815;	A2A6M5;
Cellular Localization	Cytoplasm, perinuclear region . Cytoplasm, cytoskeleton . Cytoplasmic vesicle, autophagosome membrane ; Peripheral membrane protein . According to PubMed:7540613, localizes to nuclear dots. According to PubMed:9230084 and PubMed:12869526, it is not a nuclear dot-associated protein but localizes predominantly in the cytoplasm with a coarse-grained distribution preferentially close to the nucleus. .		
Tissue specificity	Expressed in all tissues tested with highest expression in skeletal muscle and lowest in brain.		
Function	Function:May play a role in ruffle formation and actin cytoskeleton organization. Seems to negatively regulate constitutive secretion.,miscellaneous:In (PubMed:7540613) herpes simplex virus-1 infection removed CALCOCO2 from the nucleus, however, remained faintly in areas shown to be domains, containing splicing components. Treatment with IFNB and IFNG showed an increase in number and size of CALCOCO2-specific dots and partial redistribution to the cytoplasm. In (PubMed:9230084) IFNG increased gene expression only slightly and IFNB did not increase expression.,subcellular location:In (PubMed:7540613) localized to nuclear dots. In (PubMed:9230084/12869526) CALCOCO2 is not a nuclear dot-associated protein but localized predominantly in the cytoplasm with a coarse-grained distribution preferentially close to the nucleus.,subunit:Part of a complex consisting of CALCOCO2, TAX1BP1 and MYO6. Interacts with GEMIN4.,tissue specificity:Expressed in all tissues tested with highest epression in skeletal muscle and lowest in brain.,		

| Validation Data



Western blot analysis of lysates from SW480 cells, primary antibody was diluted at 1:1000, 4°over night



Immunofluorescence analysis of MCF7 cell. 1, primary Antibody was diluted at 1:100(4°C overnight). 2, Goat Anti Rabbit IgG (H&L) - AF594 Secondary antibody(catalog No: RS3611) was diluted at 1:500(room temperature, 50min).

Contact information

Orders: order@immunoway.com
Support: tech@immunoway.com
Telephone: 877-594-3616 (Toll Free), 408-747-0185
Website: <http://www.immunoway.com>
Address: 2200 Ringwood Ave San Jose, CA 95131 USA



Please scan the QR code
to access additional
product information:
**CALCOCO2 Rabbit
pAb**

For Research Use Only. Not for Use in Diagnostic Procedures.

[Antibody](#) | [ELISA Kits](#) | [Protein](#) | [Reagents](#)