

GGCT Rabbit pAb

CatalogNo: YN3041

| Key Features

Host Species

- Rabbit

Reactivity

- Human, Mouse

Applications

- WB, ELISA

MW

- 20kD (Observed)

Isotype

- IgG

| Recommended Dilution Ratios

WB 1:500-2000

ELISA 1:5000-20000

| Storage

Storage* -15°C to -25°C/1 year (Do not lower than -25°C)

Formulation Liquid in PBS containing 50% glycerol, and 0.02% sodium azide.

| Basic Information

Clonality Polyclonal

| Immunogen Information

Immunogen Synthesized peptide derived from part region of human protein

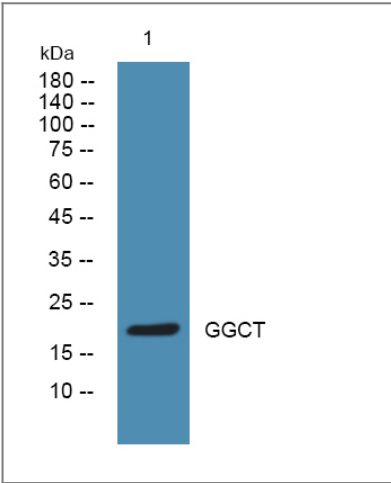
Specificity GGCT Polyclonal Antibody detects endogenous levels of protein.

| Target Information

Gene name GGCT C7orf24 CRF21

Protein Name	Gamma-glutamylcyclotransferase (Cytochrome c-releasing factor 21)		
	Organism	Gene ID	UniProt ID
	Human	79017 ;	O75223 ;
	Mouse		Q9D7X8 ;
Cellular Localization	cytosol,extracellular exosome,		
Tissue specificity	Kidney,Lung,Skeletal muscle,Skin,Urinary bladder,		
Function	Catalytic activity:(Gamma-L-glutamyl)-L-amino acid = 5-oxoproline + L-amino acid.,Function:Catalyzes the formation of 5-oxoproline from gamma-glutamyl dipeptides and may play a significant role in glutathione homeostasis. Induces release of cytochrome c from mitochondria with resultant induction of apoptosis.,induction:By geranylgeraniol.,similarity:Belongs to the gamma-glutamylcyclotransferase family.,subunit:Homodimer.,		

Validation Data



Western blot analysis of lysates from K562 cells, primary antibody was diluted at 1:1000, 4°over night

Contact information

Orders: order@immunoway.com
Support: tech@immunoway.com
Telephone: 877-594-3616 (Toll Free), 408-747-0185
Website: http://www.immunoway.com
Address: 2200 Ringwood Ave San Jose, CA 95131 USA



Please scan the QR code to access additional product information:
GGCT Rabbit pAb

