

CO8G Rabbit pAb

CatalogNo: YN3019

| Key Features

Host Species

- Rabbit

Reactivity

- Human, Mouse

Applications

- WB, ELISA

MW

- 22kD (Observed)

Isotype

- IgG

| Recommended Dilution Ratios

WB 1:500-2000

ELISA 1:5000-20000

| Storage

Storage* -15°C to -25°C/1 year (Do not lower than -25°C)

Formulation Liquid in PBS containing 50% glycerol, 0.5% BSA and 0.02% sodium azide.

| Basic Information

Clonality Polyclonal

| Immunogen Information

Immunogen Synthesized peptide derived from part region of human protein

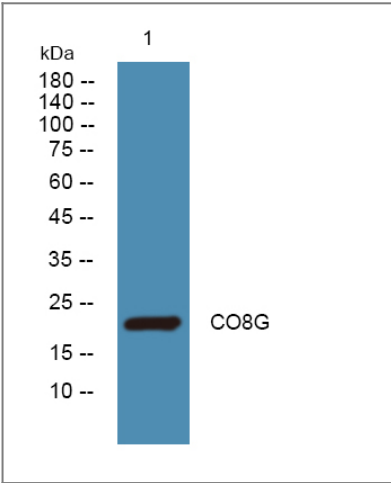
Specificity CO8G Polyclonal Antibody detects endogenous levels of protein.

| Target Information

Gene name C8G

Protein Name	Complement component C8 gamma chain		
	Organism	Gene ID	UniProt ID
	Human	733;	P07360;
	Mouse		Q8VCG4;
Cellular Localization	Secreted.		
Tissue specificity	Blood,Colon,Liver,		
Function	Function:C8 is a constituent of the membrane attack complex. C8 binds to the C5B-7 complex, forming the C5B-8 complex. C5-B8 binds C9 and acts as a catalyst in the polymerization of C9. The gamma subunit seems to be able to bind retinol.,similarity:Belongs to the calycin superfamily. Lipocalin family.,subunit:C8 is composed of three chains: alpha, beta and gamma. The alpha and gamma chains are disulfide bonded.,		

Validation Data



Western blot analysis of lysates from KB cells, primary antibody was diluted at 1:1000, 4°over night

Contact information

Orders: order@immunoway.com
 Support: tech@immunoway.com
 Telephone: 877-594-3616 (Toll Free), 408-747-0185
 Website: <http://www.immunoway.com>
 Address: 2200 Ringwood Ave San Jose, CA 95131 USA



Please scan the QR code to access additional product information:
CO8G Rabbit pAb

