

MIEN1 Rabbit pAb

CatalogNo: YN3004

Key Features

Host Species

- Rabbit

Reactivity

- Human, Mouse

Applications

- WB, ELISA

MW

- 12kD (Observed)

Isotype

- IgG

Recommended Dilution Ratios

WB 1:500-2000

ELISA 1:5000-20000

Storage

Storage* -15°C to -25°C/1 year (Do not lower than -25°C)

Formulation Liquid in PBS containing 50% glycerol, 0.5% BSA and 0.02% sodium azide.

Basic Information

Clonality Polyclonal

Immunogen Information

Immunogen Synthesized peptide derived from part region of human protein AA range: 1-50

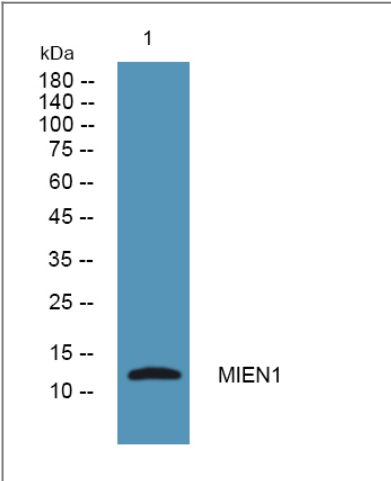
Specificity MIEN1 Polyclonal Antibody detects endogenous levels of protein.

Target Information

Gene name MIEN1 C17orf37 RDX12 XTP4

Protein Name	Migration and invasion enhancer 1 (HBV X-transactivated gene 4 protein) (HBV XAg-transactivated protein 4) (Protein C35)		
	Organism	Gene ID	UniProt ID
	Human	84299;	Q9BRT3;
	Mouse		Q9CQ86;
Cellular Localization	Cytoplasm, cytosol. Cell membrane; Lipid-anchor; Cytoplasmic side. Concentrates at the leading edge of migrating cells. Localizes outside membrane raft regions.		
Tissue specificity	Among normal tissues, present only in Leydig cells. Strongly up-regulated in breast cancers and in brain cancer distant metastasis (at protein level). Up-regulated in prostate cancer cells and in the higher grades of prostate adenocarcinoma (at protein level).		
Function	Function:May be involved in a redox-related process .,similarity:Belongs to the SelWTH family.,		

Validation Data



Western blot analysis of lysates from Jurkat cells, primary antibody was diluted at 1:1000, 4°over night

Contact information

Orders: order@immunoway.com
 Support: tech@immunoway.com
 Telephone: 877-594-3616 (Toll Free), 408-747-0185
 Website: <http://www.immunoway.com>
 Address: 2200 Ringwood Ave San Jose, CA 95131 USA



Please scan the QR code to access additional product information:
MIEN1 Rabbit pAb