

RFA4 Rabbit pAb

CatalogNo: YN2990

Key Features

Host Species

- Rabbit

Reactivity

- Human

Applications

- WB,ELISA

MW

- 28kD (Observed)

Isotype

- IgG

Recommended Dilution Ratios

WB 1:500-2000

ELISA 1:5000-20000

Storage

Storage* -15°C to -25°C/1 year(Do not lower than -25°C)

Formulation Liquid in PBS containing 50% glycerol,0.5% BSA and 0.02% sodium azide.

Basic Information

Clonality Polyclonal

Immunogen Information

Immunogen Synthesized peptide derived from part region of human protein

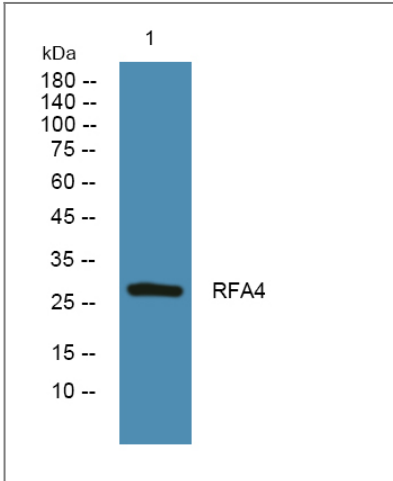
Specificity RFA4 Polyclonal Antibody detects endogenous levels of protein.

Target Information

Gene name RPA4

Protein Name	Replication protein A 30 kDa subunit (RP-A p30) (Replication factor A protein 4) (RF-A protein 4)		
	Organism	Gene ID	UniProt ID
	Human	29935 ;	Q13156 ;
Cellular Localization	Nucleus . Localizes to DNA repair foci after DNA damage.		
Tissue specificity	Preferentially expressed in placental and colon mucosa. Widely expressed at intermediate or lower levels.		
Function	Function:Absolutely required for simian virus 40 DNA replication in vitro. It participates in a very early step in initiation. RP-A is a single-stranded DNA-binding protein.,subunit:Interacts with RPA1 and RPA3. In a tissue-specic manner, may replace RPA2 in the replication protein A heterotrimer.,tissue specificity:Preferentially expressed in placental and colon mucosa.,		

Validation Data



Western blot analysis of lysates from K562 cells, primary antibody was diluted at 1:1000, 4°over night

Contact information

Orders: order@immunoway.com
Support: tech@immunoway.com
Telephone: 877-594-3616 (Toll Free), 408-747-0185
Website: http://www.immunoway.com
Address: 2200 Ringwood Ave San Jose, CA 95131 USA



Please scan the QR code to access additional product information:
RFA4 Rabbit pAb