

DICER Rabbit pAb

CatalogNo: YN2949

Key Features

Host Species

- Rabbit

Reactivity

- Human, Mouse

Applications

- WB, ELISA

MW

- 211kD (Observed)

Isotype

- IgG

Storage

Storage* -15°C to -25°C/1 year (Do not lower than -25°C)**Formulation** Liquid in PBS containing 50% glycerol, 0.5% BSA and 0.02% sodium azide.

Recommended Dilution Ratios

WB 1:500-2000**ELISA 1:5000-20000**

Basic Information

Clonality Polyclonal

Immunogen Information

Immunogen Synthesized peptide derived from part region of human protein**Specificity** DICER Polyclonal Antibody detects endogenous levels of protein.

Target Information

Gene name DICER1 DICER HERNIA KIAA0928

Protein Name Endoribonuclease Dicer (Helicase with RNase motif) (Helicase MOI)

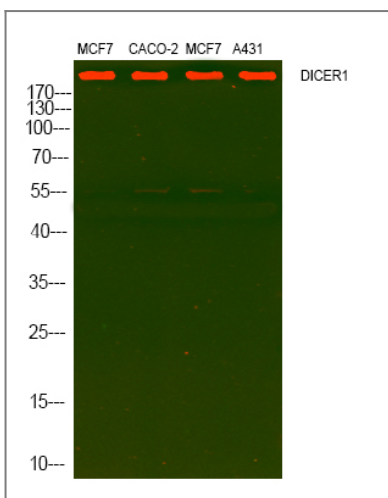
Organism	Gene ID	UniProt ID
Human	23405;	Q9UPY3;
Mouse		Q8R418;

Cellular Localization Cytoplasm . Cytoplasm, perinuclear region .

Tissue specificity Brain,Lung,Testis,

Function cofactor: Binds 2 magnesium or manganese ions per subunit., Function: Required for formation of the RNA induced silencing complex (RISC). Component of the RISC loading complex (RLC), also known as the micro-RNA (miRNA) loading complex (miRLC), which is composed of DICER1, EIF2C2/AGO2 and TARBP2. Within the RLC/miRLC, DICER1 and TARBP2 are required to process precursor miRNAs (pre-miRNAs) to mature miRNAs and then load them onto EIF2C2/AGO2. EIF2C2/AGO2 bound to the mature miRNA constitutes the minimal RISC and may subsequently dissociate from DICER1 and TARBP2. Also cleaves double-stranded RNA to produce short interfering RNAs (siRNAs) which target the selective destruction of complementary RNAs., online information: The dark side of RNA - Issue 87 of October 2007, similarity: Belongs to the helicase family. Dicer subfamily., similarity: Contains 1 Dicer dsRNA-binding fold domain., similarity: Contains 1 DRBM (double-stranded RNA-binding) domain., similarity: Contains 1 helicase ATP-binding domain., similarity: Contains 1 helicase C-terminal domain., similarity: Contains 1 PAZ domain., similarity: Contains 2 RNase III domains., subunit: Component of the RISC loading complex (RLC), or micro-RNA (miRNA) loading complex (miRLC), which is composed of DICER1, EIF2C2/AGO2 and TARBP2. Note that the trimeric RLC/miRLC is also referred to as RISC. Interacts with DHX9, EIF2C1, PIWIL1 and PRKRA. Associates with the 60S ribosome.,

Validation Data



Western Blot analysis of various cell lysis. Primary Antibody was diluted at 1:1000. Secondary antibody (catalog#:RS23920) was diluted at 1:10000

Contact information

Orders: order@immunoway.com
Support: tech@immunoway.com
Telephone: 877-594-3616 (Toll Free), 408-747-0185
Website: http://www.immunoway.com
Address: 2200 Ringwood Ave San Jose, CA 95131 USA



Please scan the QR code
to access additional
product information:
DICER Rabbit pAb

For Research Use Only. Not for Use in Diagnostic Procedures.

[Antibody](#) | [ELISA Kits](#) | [Protein](#) | [Reagents](#)