

GON2 Rabbit pAb

CatalogNo: YN2926

Key Features

Host Species

- Rabbit

Reactivity

- Human

Applications

- WB,ELISA

MW

- 13kD (Observed)

Isotype

- IgG

Recommended Dilution Ratios

WB 1:500-2000

ELISA 1:5000-20000

Storage

Storage* -15°C to -25°C/1 year(Do not lower than -25°C)

Formulation Liquid in PBS containing 50% glycerol,0.5% BSA and 0.02% sodium azide.

Basic Information

Clonality Polyclonal

Immunogen Information

Immunogen Synthesized peptide derived from part region of human protein AA range: 1-50

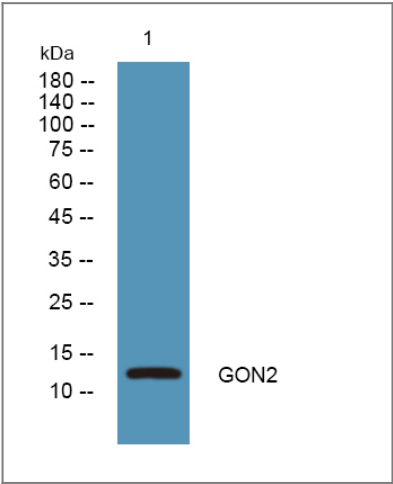
Specificity GON2 Polyclonal Antibody detects endogenous levels of protein.

Target Information

Gene name GNRH2

Protein Name	Progonadoliberin-2 (Progonadoliberin II) [Cleaved into: Gonadoliberin-2 (Gonadoliberin II) (Gonadotropin-releasing hormone II) (GnRH II) (Luliberin II) (Luteinizing hormone-releasing hormone II) (LH-RH II); GnRH-associated peptide 2 (GnRH-associated peptide II)]		
	Organism	Gene ID	UniProt ID
	Human	2797 ;	O43555 ;
Cellular Localization	Secreted.		
Tissue specificity	Midbrain; expressed at significantly higher levels outside the brain (up to 30-fold), particularly in the kidney, bone marrow and prostate.		
Function	Alternative products:Experimental confirmation may be lacking for some isoforms,Function:Stimulates the secretion of gonadotropins; it stimulates the secretion of both luteinizing and follicle-stimulating hormones.,similarity:Belongs to the GnRH family.,tissue specificity:Midbrain; expressed at significantly higher levels outside the brain (up to 30-fold), particularly in the kidney, bone marrow and prostate.,		

Validation Data



Western blot analysis of lysates from Jurkat cells, primary antibody was diluted at 1:1000, 4°over night

Contact information

Orders: order@immunoway.com
 Support: tech@immunoway.com
 Telephone: 877-594-3616 (Toll Free), 408-747-0185
 Website: <http://www.immunoway.com>
 Address: 2200 Ringwood Ave San Jose, CA 95131 USA



Please scan the QR code
 to access additional
 product information:
GON2 Rabbit pAb

