

SRTD1 Rabbit pAb

CatalogNo: YN2914

Key Features

Host Species

- Rabbit

Reactivity

- Human, Mouse

Applications

- WB, ELISA

MW

- 25kD (Observed)

Isotype

- IgG

Storage

Storage* -15°C to -25°C/1 year (Do not lower than -25°C)

Formulation Liquid in PBS containing 50% glycerol, 0.5% BSA and 0.02% sodium azide.

Recommended Dilution Ratios

WB 1:500-2000

ELISA 1:5000-20000

Basic Information

Clonality Polyclonal

Immunogen Information

Immunogen Synthesized peptide derived from part region of human protein

Specificity SRTD1 Polyclonal Antibody detects endogenous levels of protein.

Target Information

Gene name SERTAD1 SEI1

Protein Name SERTA domain-containing protein 1 (CDK4-binding protein p34SEI1) (SEI-1) (Transcriptional regulator interacting with the PHD-bromodomain 1) (TRIP-Br1)

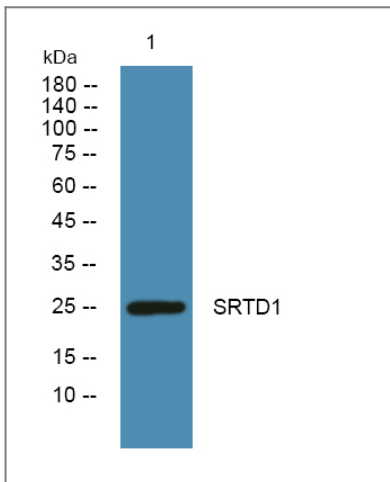
Organism	Gene ID	UniProt ID
Human	29950 ;	Q9UHV2 ;
Mouse		Q9JL10 ;

Cellular Localization nucleus,cytoplasm,

Tissue specificity Human small intestine,Mammary gland,Uterus,

Function Function:Acts at E2F-responsive promoters to integrate signals provided by PHD- and/or bromodomain-containing transcription factors. Stimulates E2F-1/DP-1 transcriptional activity. Renders the activity of cyclin D1/CDK4 resistant to the inhibitory effects of p16(INK4a).,similarity:Contains 1 SERTA domain.,subunit:Interacts with the PHD-bromodomain of TIF1, TRIM28/TIF1B and p300/CBP. Binds to DP1. Also interacts with CDK4.,

Validation Data



Western blot analysis of lysates from KB cells, primary antibody was diluted at 1:1000, 4° over night

Contact information

Orders: order@immunoway.com
Support: tech@immunoway.com
Telephone: 877-594-3616 (Toll Free), 408-747-0185
Website: <http://www.immunoway.com>
Address: 2200 Ringwood Ave San Jose, CA 95131 USA



Please scan the QR code to access additional product information:
SRTD1 Rabbit pAb

